

baumit.com



Product Catalogue

Facades • Plasters • Screeds

Baumit. Pioneer of innovation in ETICS



INSULATION FIRST

FINAL COATINGS

COLOR Facade Paints	24
TOP/CLASSICO Facade Renders	28
PRIMER Substrate Preparation & Additives	40

ETICS

CONTACT/FIX/FLEX Adhesives & Base Coats	46
INSUALTION BOARDS	49
MESHES / STARTRACK / FIXING SYSTEMS	50
ACCESSORIES	54

EXTERIOR PLASTERS

CEMENT BASED MACHINE PLASTERS	58
-------------------------------	----



INTERIOR VALUES

HEALTHY LIVING

IONIT	64
KLIMA	66

INTERIOR COATINGS

Putties & Fine Plasters	69
-------------------------	----

INTERIOR PLASTERS

CEMENT BASED MACHINE PLASTERS	70
CEMENT BASED HAND PLASTERS	71
GYPSUM BASED MACHINE PLASTERS	71
SUB SURFACE PREPARATION	71



SOLIDITY COUNTS

TILING

BAUMACOL Joint Filling Mortars	74
BAUMACOL Adhesives	75
BAUMACOL Substrate Preparation	77
BAUMACOL Supplements	78

FLOORING

SELF-LEVELLING SCREEDS	80
CEMENT BASED FLOOR SCREEDS	81
SUB SURFACE PREPARATION	82

CONSTRUCTION

MASONRY MORTARS	82
READY MIX CONCRETE MORTARS	83



SERVICE

CUSTOMER SERVICE	86
GENERAL TERMS & CONDITIONS	90
INDEX	94



ETICS

- O** OPENSYSYSTEM
- E** STARSYSYSTEM EPS
- M** STARSYSYSTEM MİNERAL
- I** POWERSYSYSTEM
- P** PROSYSYSTEM

ETICS = EXTERNAL THERMAL INSULATION COMPOSITE SYSTEMS



Pioneer of innovation in ETICS



HEAD OFFICE



Esencehir Mah. Baraj Yolu Cad.
Hale Sok. No.:10-B Dudullu
Ümraniye/İstanbul
Email: info@baumit.com.tr

FACTORY



Köseler Köyü Mevkii S.S. İstanbul
Mermeciler Sanayi Sitesi
37. Cadde No.: 17
Dilovası/Kocaeli

DISTRIBUTION AREAS



Marmara Anatolia Region
Marmara Europe Region
Marmara South Region
Aegean and Mediterranean Region
Central Anatolia and New Markets Region
Black Sea Region
Export



Great Stories behind great buildings

Outstanding buildings are honored as part of the Baumit Life Challenge. But what are the stories behind them? Take a look with us behind the facades.

One outstanding example and therefore a more than worthy cover of this year's Pricebook is Cukrarna Gallery in Slovenia - the highly deserving winner of the Baumit Life Challenge 2022 in Valencia.

Formerly a sugar factory dating back to 1828, it has undergone a remarkable transformation. Today, it stands as a versatile haven for contemporary art, enriching the cultural landscape of Ljubljana. Architect Jernej Šipoš, the visionary behind this project, shares captivating insights into its rejuvenation.

But the story of Cukrarna Gallery is just one of the many remarkable journeys Baumit has undertaken together with its partners. While „Wings“ in Romania soared to new heights and Chiavalon Oil Mill in Croatia became a beacon of success there are many more inspiring stories just waiting to be revealed on our Baumit Homepage.



We can't wait for all the new buildings and their stories that will come up with the next Baumit Life Challenge on the 23rd of May in Ljubljana! Discover them all at lifechallenge.baumit.com.

To watch videos from different countries





Sustainability at Baumit

GO2morrow

GO2morrow gets to the heart of our sustainable actions. Because everything we do is set up for the long term. This is the path we have consistently pursued since the company was founded.

It is our incentive to take responsibility as one of the leading manufacturer of building materials in Europe. For every measure we take - in ecological, economic and social terms. We have already achieved a lot. With our GO2morrow Goals 2030, we are setting the bar even higher.

✓ 45M m² facade insulation every year across Europe- done!

This means a saving of 1 million tons of CO₂e per year and is roughly comparable to the amount of oxygen produced by 90 million trees per year. A saving that is repeated year after year.

✓ 800 million tons CO₂e saved since the beginning of Baumit's ETICS success story - done!

This is equivalent to the amount of CO₂ produced by 10 million cars in 15 years or 300,000 trips to the moon. Yes, our savings even exceed Germany's annual CO₂ emissions.



„People, planet, profit – that’s why we are here.”

CEO Baumit Group, Robert Schmid

We want to achieve even more ecologically by 2030

Reducing CO₂e by 20%

This is our most important ecological GO2morrow goal. Improving the formulations of our products, environmentally friendly binders and recycled packaging materials all contribute to reducing our CO₂e emissions by 20% per produced ton.

10% less or green energy per ton of building material produced

Solar panels, more efficient use of energy, and the best available technologies are important steps along the way.

10% circular practices throughout Baumit

We are achieving this with our pioneering product GO2morrow recycled concrete and the development of innovative technologies.



We want to achieve more for people

Equal opportunities for our employees.
We will make the working environment even more inclusive, promote diversity, achieve a gender balanced management team, and offer everyone the best possible conditions for personal and professional development.

Supporting the local community.
Here, get involved in social projects, provide help for disadvantaged people, engage in local spon-

soring, and contribute financial resources, Baumit building materials, or volunteer work.

No accidents in the workplace.
This is a goal we put a lot of energy into. Our Safety, Order & Sanitation Guide, occupational health and safety and medical precautions support us in this.

We want to achieve more economically

Secure growth.
Thinking long-term to maintain and expand our market leadership. This secures jobs. Prudence and quality are our clear focus.

Saving raw materials and preserving the environment.
We will save transport kilometers, use old buildings as a source of raw materials, use the latest technologies and invest in durable products and deconstructability.

Regionalism in supply chains.
Highest quality standards and proximity of partners are crucial. We take responsibility for the entire life cycle of our products.

Scan here for Sustainability at Baumit:



The basis for GO2morrow goals are the findings of the VIVA Research Park

The fundamentals for „Healthy Living“ are scientifically analyzed, tested and confirmed in Europe's largest comparative research park. Three core elements have proven to be fundamental in terms of health, quality of living and energy efficiency:



Take a 3D tour of the VIVA Research Park!



The three fundamentals for Healthy Living

Insulation first the facade

- Warm in winter, cool in summer
- No mold
- No drafts
- Proper humidity

Interior values the interior

- Humidity regulation for healthy room climate
- No breeding ground for viruses and bacteria
- Clean room air
- Comfortable room temperature

Solidity counts the shell

- Solid building materials as sustainable energy storage
- Constant temperature
- Noise protection
- Breathable building materials



3 Elements of Healthy Living

After years of extensive research, analyzing millions of data, it's evident that construction methods and materials significantly impact health and quality of life in housing. Regardless of the design chosen, all buildings must consider three criteria for a healthy living environment:

INSULATION FIRST

Protection and cosiness

INTERIOR VALUES

Natural and healthy living

SOLIDITY COUNTS

Safety and comfort



INSULATION FIRST



Protection
and cosiness

Good thermal insulation not only makes a significant contribution to the energy efficiency of your building, but also ensures pleasantly warm walls in winter and pleasantly cool walls in summer. The living space thus becomes a comfortable space with no draughts. Living becomes more comfortable and healthy.



INTERIOR VALUES



Natural and
healthy living

A good interior mineral plaster system can act as a buffer for any peaks in humidity by absorbing excessive air humidity into the first few centimetres and releasing it again later. This guarantees a constant level of air-humidity, ensuring a healthy indoor climate.



SOLIDITY COUNTS



Safety and
comfort

Solid walls, as well as solid ceilings and floors, can be externally protected with good thermal insulation so they store heat in the winter and keep the coolness in the house in summer. The more mass, the more effective the thermal storage and the more stable, pleasant and healthy the indoor climate.

As Europe's ETICS giant, we protect not only buildings but also our future.

While raising awareness of children about global warming, climate change, energy saving and thermal insulation with the special content we have developed within the scope of our corporate social responsibility project 'Geleceğimizi Mantoluyoruz', we touch the lives of children living in harsh conditions with the coats we give away.

Because we believe that a good future is built on solid foundations.

To review the website of "Geleceğimizi Mantoluyoruz":



To watch Baumit animation video:



WE ARE COATING OUR FUTURE!

With our corporate social responsibility project that we started in 2019, we aim to raise awareness of energy efficiency to future generations and explain the importance of ETICS for the world.

We also gifted the children a notebook on the first page of which explains the importance of energy efficiency and ETICS in buildings in a language they can understand.

We have prepared contents about global warming and energy efficiency that children can easily understand at gelecegimizimantoluyoruz.com



As Baumit, we believe that if a child's perspective changes, many things can change, and we believe that in order for our children, the true owners of the future, to exist in a more livable world, thoughts must change first!

Pioneer of innovation in ETICS



Dear business partners,

Nowadays, when the global climate crisis threatens the future of our world, the importance of the steps to be taken towards sustainability is increasing day by day. As Baumit, the "Pioneer of Innovation in ETICS", we continue to look for completely different ways to implement sustainable works, reduce carbon footprint and most importantly, minimize waste as much as possible with our deep-rooted experience and knowledge of more than 100 years.

In our country, where approximately 80 percent of buildings are still uninsulated, we offer effective ETICS with the innovative products we have developed, enabling an average of 50 percent energy savings in buildings. By ETICS 45 million square meters per year, we reduce one million tons of CO₂. Since the beginning of Baumit's success story, we have achieved 800 million tons of CO₂ savings and this figure is equivalent to the amount of CO₂ emitted by 10 million cars into the atmosphere or 300 thousand trips to the moon and back.

In our journey, which we continue with the strong synergy we have created with all stakeholders that make up our value chain, we have always experienced completely different excitements. In every step we have taken to add value to our country, create healthy living spaces and leave a more livable world for future generations, we have focused on realizing our dream of "A Unique Future". Thanks to the successful results of our R&D and innovation investments that put us one step ahead in our sector, we have written many success stories that underline our "A Unique" motto.

We continue to work with a completely different excitement and determination to carry our 35-year heritage in the construction industry into the future with our environmentally friendly innovative products that focus on sustainability and our solution-oriented innovative perspective. With the mission of "The best energy is the energy we don't waste", we are working harder every day to develop environmentally friendly, sustainable products that provide high energy savings in order to leave a beautiful world for our children.

Together with all stakeholders of our sector, we have a completely different power that can offer high added value to the construction of sustainable housing in our country. In 2024, when we step into the second century of our Republic, we will be the architects of new achievements together by exchanging information with you, our valuable business partners, who are walking in line with the same goals as us. Thanks to our deep-rooted innovation heritage, our field experience and our meticulous R&D studies, we will continue to develop innovative technologies for a completely different and even stronger Baumit in the coming years.

We would like to thank you for your contributions in this journey we have embarked on with the vision of 'We are strong together, we are good together' and wish you good work.


ATALAY ÖZDAYI
 General Manager

Baumit CrystalSet

Page 28 for detailed information

- Natural & Breathable
- Anti-Dust & Anti-Greying
- Extremely durable



Baumit Contact

Page 46 for detailed information

- Fast
- Easy
- Sustainable



Baumit ALL IN Beton

Page 83 for detailed information

ALL IN Beton

Concrete in self-dissolving bags.

- Self-dissolving bag
- No waste & less dust on construction site
- Natural fibre reinforced concrete



INSULATION FIRST

FINAL COATINGS

COLOR Facade Paints	24
TOP/CLASSICO Facade Renders	28
PRIMER Substrate Preparation & Additives	42

ETICS

CONTACT/FIX/FLEX Adhesives & Base Coats	46
INSULATION BOARDS	49
MESHES / STARTRACK / FIXING SYSTEMS	50
ACCESSORIES	54

EXTERIOR PLASTERS

CEMENT BASED MACHINE PLASTERS	58
--	----

INTERIOR VALUES

HEALTHY LIVING

IONIT	64
KLIMA	66

INTERIOR COATINGS

PUTTIES & FINE PLASTERS	69
--	----

INTERIOR PLASTERS

CEMENT BASED MACHINE PLASTERS	70
CEMENT BASED HAND PLASTERS	71
GYPHUM BASED MACHINE PLASTERS	71
SUB SURFACE PREPARATION	71

SOLIDITY COUNTS

TILING

BAUMACOL Joint Filling Mortars	74
BAUMACOL Adhesives	75
BAUMACOL Substrate Preparation	77
BAUMACOL Supplements	78

FLOORING

SELF-LEVELLING SCREEDS	80
CEMENT BASED FLOOR SCREEDS	81
SUB SURFACE PREPARATION	82

CONSTRUCTION

MASONRY MORTARS	82
READY MIX CONCRETE MORTARS	83

SERVICE

CUSTOMER SERVICE	86
GENERAL TERMS & CONDITIONS	90
INDEX	94



Life

COLORED BY BAUMIT

Baumit Life Color System

Download the Baumit Facade App now,
upload a photo of your house and color it
within seconds!

Click here to
go to the app:



www.baumit.com





Baumit Life Color System

W1200	W1209	0021	0031	0041	0051	0061
W1201	W1210	0022	0032	0042	0052	0062
W1202	W1211	0023	0033	0043	0053	0063
W1203	0014	0024	0034	0044	0054	0064
W1204	0015	0025	0035	0045	0055	0065
W1205	0016	0026	0036	0046	0056	0066
W1206	0017	0027	0037	0047	0057	0067
W1207	0018	0028	0038	0048	0058	0068
W1208	0019	0029	0039	0049	0059	0069

0321	0331	0341	0351	0361	0371	0381
0322	0332	0342	0352	0362	0372	0382
0323	0333	0343	0353	0363	0373	0383
0324	0334	0344	0354	0364	0374	0384
0325	0335	0345	0355	0365	0375	0385
0326	0336	0346	0356	0366	0376	0386
0327	0337	0347	0357	0367	0377	0387
0328	0338	0348	0358	0368	0378	0388
0329	0339	0349	0359	0369	0379	0389

0601	0611	0621	0631	0671	0681	0691
0602	0612	0622	0632	0672	0682	0692
0603	0613	0623	0633	0673	0683	0693
0604	0614	0624	0634	0674	0684	0694
0605	0615	0625	0635	0675	0685	0695
0606	0616	0626	0636	0676	0686	0696
0607	0617	0627	0637	0677	0687	0697
0608	0618	0628	0638	0678	0688	0698
0609	0619	0629	0639	0679	0689	0699

1381	1341	1351	1361	1371	0971	1331
1382	1342	1352	1362	1372	0972	1332
1383	1343	1353	1363	1373	0973	1333
1384	1344	1354	1364	1374	0974	1334
1385	1345	1355	1365	1375	0975	1335
1386	1346	1356	1366	1376	0976	1336
1387	1347	1357	1367	1377	0977	1337
1388	1348	1358	1368	1378	0978	1338
1389	1349	1359	1369	1379	0979	1339

0071	0081	0121	0131	0141	0151	0161	0171	0181	0191	1251
0072	0082	0122	0132	0142	0152	0162	0172	0182	0192	1252
0073	0083	0123	0133	0143	0153	0163	0173	0183	0193	1253
0074	0084	0124	0134	0144	0154	0164	0174	0184	0194	1254
0075	0085	0125	0135	0145	0155	0165	0175	0185	0195	1255
0076	0086	0126	0136	0146	0156	0166	0176	0186	0196	1256
0077	0087	0127	0137	0147	0157	0167	0177	0187	0197	1257
0078	0088	0128	0138	0148	0158	0168	0178	0188	0198	1258
0079	0089	0129	0139	0149	0159	0169	0179	0189	0199	1259

0391	1281	1291	0401	0411	1311	1301	0421	0431	0441	0451
0392	1282	1292	0402	0412	1312	1302	0422	0432	0442	0452
0393	1283	1293	0403	0413	1313	1303	0423	0433	0443	0453
0394	1284	1294	0404	0414	1314	1304	0424	0434	0444	0454
0395	1285	1295	0405	0415	1315	1305	0425	0435	0445	0455
0396	1286	1296	0406	0416	1316	1306	0426	0436	0446	0456
0397	1287	1297	0407	0417	1317	1307	0427	0437	0447	0457
0398	1288	1298	0408	0418	1318	1308	0428	0438	0448	0458
0399	1289	1299	0409	0419	1319	1309	0429	0439	0449	0459

0701	0711	0721	0731	0741	0751	0761	0771	0781	0791	0831
0702	0712	0722	0732	0742	0752	0762	0772	0782	0792	0832
0703	0713	0723	0733	0743	0753	0763	0773	0783	0793	0833
0704	0714	0724	0734	0744	0754	0764	0774	0784	0794	0834
0705	0715	0725	0735	0745	0755	0765	0775	0785	0795	0835
0706	0716	0726	0736	0746	0756	0766	0776	0786	0796	0836
0707	0717	0727	0737	0747	0757	0767	0777	0787	0797	0837
0708	0718	0728	0738	0748	0758	0768	0778	0788	0798	0838
0709	0719	0729	0739	0749	0759	0769	0779	0789	0799	0839

0981	0991	1001	1011	1411	1021	1401	1391	1031	1041	1051
0982	0992	1002	1012	1412	1022	1402	1392	1032	1042	1052
0983	0993	1003	1013	1413	1023	1403	1393	1033	1043	1053
0984	0994	1004	1014	1414	1024	1404	1394	1034	1044	1054
0985	0995	1005	1015	1415	1025	1405	1395	1035	1045	1055
0986	0996	1006	1016	1416	1026	1406	1396	1036	1046	1056
0987	0997	1007	1017	1417	1027	1407	1397	1037	1047	1057
0988	0998	1008	1018	1418	1028	1408	1398	1038	1048	1058
0989	0999	1009	1019	1419	1029	1409	1399	1039	1049	1059

The colors and patterns shown serve as a color guide for the selected product. Absolute color matching with the supplied material cannot be guaranteed.
 All Shades of White tones (starting with W1200) are available for Baumit StarTop/Color, CrystalTop, CreativTop (excluding Silk) and SilikonTop/Color. With the exception of W1200 StarWhite which is only available in StarTop/Color and CreativTop (excluding Silk).

Final digits 1-3: It is recommended to prime with colored Baumit PremiumPrimer.
 ● Colors are only available in Baumit Pur aTop/Color.
 ▲ Colors can be used on ETCS only in Baumit PuraTop/Color, Baumit StarTop/Color & Baumit CrystalTop (available in colors 3-9 as final digit).
 More information on life.baumit.com.



● 1261	● 1271	● 0201	● 0211	● 0221	● 0231	● 0241	● 0281	● 0291	● 0301	● 0311
▲ 1262	▲ 1272	0202	0212	0222	0232	0242	0282	0292	0302	0312
▲ 1263	1273	0203	0213	0223	0233	0243	0283	0293	0303	0313
1264	1274	0204	0214	0224	0234	0244	0284	0294	0304	0314
1265	1275	0205	0215	0225	0235	0245	0285	0295	0305	0315
1266	1276	0206	0216	0226	0236	0246	0286	0296	0306	0316
1267	1277	0207	0217	0227	0237	0247	0287	0297	0307	0317
1268	1278	0208	0218	0228	0238	0248	0288	0298	0308	0318
1269	1279	0209	0219	0229	0239	0249	0289	0299	0309	0319

● 0461	● 0471	● 0481	● 0491	● 0501	● 0511	● 0521	● 0561	● 0571	● 0581	● 0591
▶ 0462	▶ 0472	▶ 0482	▶ 0492	▶ 0502	▶ 0512	▶ 0522	▶ 0562	▶ 0572	▶ 0582	▶ 0592
▶ 0463	▶ 0473	▶ 0483	▶ 0493	▶ 0503	▶ 0513	▶ 0523	▶ 0563	▶ 0573	▶ 0583	▶ 0593
▶ 0464	▶ 0474	▶ 0484	▶ 0494	▶ 0504	▶ 0514	▶ 0524	▶ 0564	▶ 0574	▶ 0584	▶ 0594
▶ 0465	▶ 0475	▶ 0485	▶ 0495	▶ 0505	▶ 0515	▶ 0525	▶ 0565	▶ 0575	▶ 0585	▶ 0595
▶ 0466	▶ 0476	▶ 0486	▶ 0496	▶ 0506	▶ 0516	▶ 0526	▶ 0566	▶ 0576	▶ 0586	▶ 0596
▶ 0467	▶ 0477	▶ 0487	▶ 0497	▶ 0507	▶ 0517	▶ 0527	▶ 0567	▶ 0577	▶ 0587	▶ 0597
▶ 0468	▶ 0478	▶ 0488	▶ 0498	▶ 0508	▶ 0518	▶ 0528	▶ 0568	▶ 0578	▶ 0588	▶ 0598
▶ 0469	▶ 0479	▶ 0489	▶ 0499	▶ 0509	▶ 0519	▶ 0529	▶ 0569	▶ 0579	▶ 0589	▶ 0599

● 0841	● 0851	● 1321	● 0861	● 0871	● 0881	● 0891	● 0901	● 0911	● 0921	● 0931
0842	▲ 0852	▲ 1322	▲ 0862	▲ 0872	▲ 0882	▲ 0892	▲ 0902	▲ 0912	▲ 0922	▲ 0932
0843	0853	1323	0863	0873	▲ 0883	▲ 0893	▲ 0903	▲ 0913	▲ 0923	▲ 0933
0844	0854	1324	0864	0874	0884	0894	0904	0914	0924	0934
0845	0855	1325	0865	0875	0885	0895	0905	0915	0925	0935
0846	0856	1326	0866	0876	0886	0896	0906	0916	0926	0936
0847	0857	1327	0867	0877	0887	0897	0907	0917	0927	0937
0848	0858	1328	0868	0878	0888	0898	0908	0918	0928	0938
0849	0859	1329	0869	0879	0889	0899	0909	0919	0929	0939

● 1061	● 1071	● 1421	● 1111	● 1121	● 1131	● 1141	● 1431	● 1441	● 1151	● 1161
1062	1072	1422	1112	1122	1132	1142	1432	1442	1152	1162
1063	1073	1423	1113	1123	1133	1143	1433	1443	1153	1163
1064	1074	1424	1114	1124	1134	1144	1434	1444	1154	1164
1065	1075	1425	1115	1125	1135	1145	1435	1445	1155	1165
1066	1076	1426	1116	1126	1136	1146	1436	1446	1156	1166
1067	1077	1427	1117	1127	1137	1147	1437	1447	1157	1167
1068	1078	1428	1118	1128	1138	1148	1438	1448	1158	1168
1069	1079	1429	1119	1129	1139	1149	1439	1449	1159	1169

Baumit Shades of White



All 12 white tones available for Baumit StarTop/Color, CreativTop und SilikonTop/Color. W1200 StarWhite only available for StarTop/Color and CreativTop!

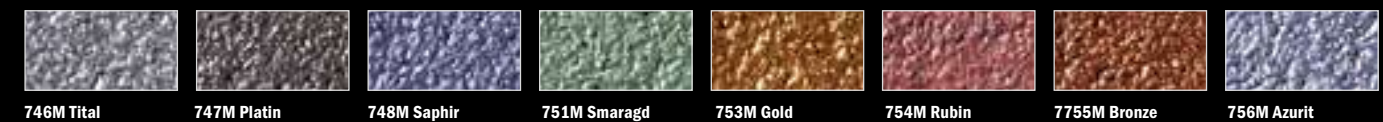
Baumit Lasur



Baumit Glitter



Baumit Metallic

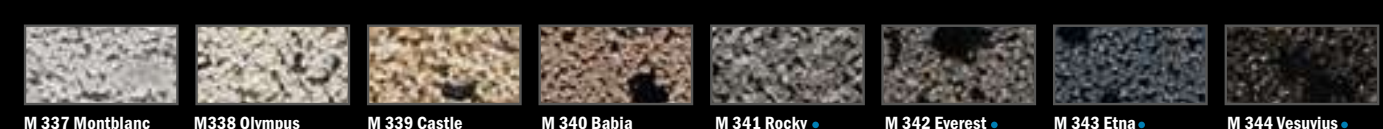


Baumit Mosaik – Essential Line



All color samples shown here serve as a visual orientation for the selected product. Slight deviations between the colors shown here, color samples, color folders, natural patterns and the materials provided are production-related possible and can not be claimed. The uniformity of color and texture can only be guaranteed within one production batch.

Baumit Mosaik – Natural Line



Can be used on ETICS only with a double reinforcement layer (minimum thickness 5mm) according to the product datasheet.

Final digits 1-3: It is recommended to prime with colored Baumit PremiumPrimer.

● Colors are only available in Baumit Pur aTop/Color.

▲ Colors can be used on ETICS only in Baumit PuraTop/Color, Baumit StarTop/Color & Baumit CrystalTop (available in colors 3-9 as final digit).

More information on life.baumit.com.

For protection and cosiness

Insulation First



FINAL COATINGS	22
ETICS	44
EXTERIOR PLASTERS	58



Beautiful & individual facades
Final Coatings

Baumit final coatings form the protective shield against weather influences of any kind.

They are not only creating the visual design of your façade, but also ensure the protection of the thermal insulation and wall structure beneath.

- Strong protection for the building
- The most innovative color system for facades
- Durable and beautiful
- Strong and safe
- Advanced technologies
- Ready to use product
- Individual and creative
- The right solution for every substrate
- Proven to last for decades

	Baumit CrystalSet	Baumit StarTop
	<ul style="list-style-type: none"> ■ Natural & Breathable ■ Anti-Dust & Anti-Greying ■ Extremely durable 	<ul style="list-style-type: none"> ■ Drypor Effect ■ Dirt resistand surface ■ Excellent application
self-cleaning	■ ■ ■ ■ ■	■ ■ ■ ■
durability	■ ■ ■ ■ ■	■ ■ ■ ■
water vapour permeability	■ ■ ■ ■ ■	■ ■ ■ ■
color variety	■ ■	■ ■ ■ ■
texture variety	■ ■ ■	■ ■ ■ ■
	Baumit StarColor	
	<ul style="list-style-type: none"> ■ Fast drying surfaces ■ Increased protection against algae ■ Perfect application 	
self-cleaning	■ ■ ■ ■	
durability	■ ■ ■ ■ ■	
water vapour permeability	■ ■ ■ ■	
color variety	■ ■ ■ ■	
color intensity	■ ■ ■ ■	

Baumit PuraTop	Baumit GranoporTop	Baumit CreativTop
<ul style="list-style-type: none"> ■ Full range of colors ■ Intense color tones ■ Cool pigments technology 	<ul style="list-style-type: none"> ■ Long life ■ Labor and time saving ■ Compliant with ETAG 004 	<ul style="list-style-type: none"> ■ Unlimited design possibilities ■ Unique texture options ■ Easy implementation
■ ■ ■ ■		■ ■ ■ ■
■ ■ ■ ■ ■	■ ■ ■ ■	■ ■ ■ ■
■ ■ ■ ■	■ ■ ■ ■	■ ■ ■ ■
■ ■ ■ ■ ■	■ ■ ■ ■ ■	■ ■ ■ ■
■ ■ ■ ■	■ ■ ■ ■ ■	■ ■ ■ ■ ■
Baumit PuraColor	Baumit Effects	
<ul style="list-style-type: none"> ■ Unlimited color range ■ Intense color tones ■ Cool pigments technology 	<ul style="list-style-type: none"> ■ Natural stone, concrete, wood appearance ■ Metallic look ■ Decorative accent 	
■ ■ ■ ■		
■ ■ ■ ■ ■	■ ■ ■ ■ ■	
■ ■ ■ ■	■ ■ ■ ■	
■ ■ ■ ■ ■	■ ■ ■ ■	
■ ■ ■ ■ ■	■ ■ ■ ■	



Beautiful & individual facades
Facade Paints

PREMIUM FACADE PAINTS



Baumit StarColor

Highly weather-resistant facade paint with silicone binder and new functional filler. The all new Drypor effect guarantees a quick-drying facade surface after rain, fog and condensation

- Fast drying surfaces
- Increased protection against algae
- Perfect application

StarColor

Consumption: approx. 0.25-0.35 l/m² for two coats
 Yield: approx. 50 m² /bucket for two coats
 Packaging: 15 l bucket, 1 pallet 24 buckets = 360 l



Baumit PuraColor

High quality pure acrylic facade paint with high covering power and very good application properties. Use when requiring more intense colors, for a rich long lasting color finish.

- Unlimited color range
- Intense color tones
- Cool pigments technology

PuraColor

Consumption: approx. 0.25-0.35 l/m² for two coats
 Yield: approx. 50 m² /bucket for two coats
 Packaging: 15 l bucket, 1 pallet 24 buckets = 360 l



Baumit Facade Paints

100% compatible with ETICS



You can now safely use dark shades on building facades with Baumit facade paints featuring Baumit Cool Pigment technology.



For detailed information about Baumit Cool Pigment technology

DESIGN FACADE PAINTS



Baunit Lasur

Ready to use, matt glaze paint for a more decorative, creative designed façade.

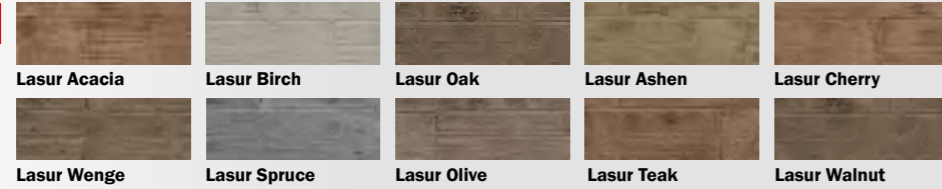
- Mat
- For creating decorative facades
- Individual design

Lasur	14L	5L
Consumption:	approx. 0.08-0.1 l/m ² approx	approx. 0.08-0.1 l/m ²
Yield:	140-175 m ² /bucket	pprox. 50-62 m ² /bucket
Packaging:	14 l bucket, 1 pallet 32 buckets = 448 l	5 l bucket, 1 pallet 64 buckets = 320 l



Baunit Wood Look Series

NEW

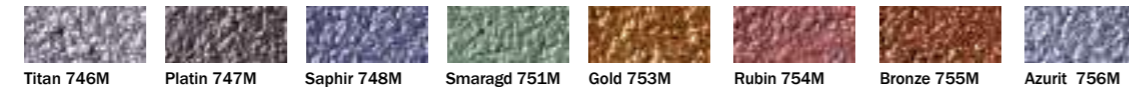


Baunit Metallic

Ready to use, metallic finish paint, for decorative wall and façade design. Create modern, luxurious finish for a truly unique building design.

- Elegant glaze
- For decorative highlights
- Imitation of metallic surfaces

Metallic	14L	5L
Consumption:	approx. 0.3-0.35 l/m ²	approx. 0.3-0.35 l/m ² approx.
Yield:	40-47 m ² /bucket	14-16,5 m ² /bucket
Packaging:	14 l bucket, 1 pallet 32 buckets = 448 l	5 l bucket, 1 pallet 64 buckets = 320 l

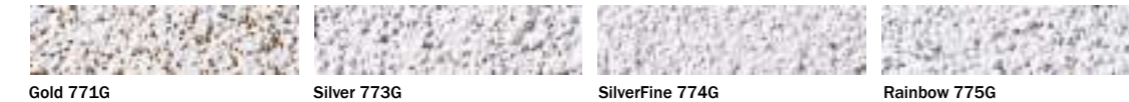


Baunit Glitter

Ready to use transparent coating with metallic glitter. Use for decorative highlights on top of other Baunit paints and renders.

- Sparkling effect through sunlight
- Decorative and exceptional
- Individual design

Glitter	14L	5L
Consumption:	approx. 0.10-0.15 l/m ²	approx. 0.10-0.15 l/m ²
Yield:	93-140 m ² /bucket	33-50 m ² /bucket
Packaging:	14 l bucket, 1 pallet 32 buckets = 448 l	5 l bucket, 1 pallet 64 buckets = 320 l



Baunit Finish

Ready to use, matt, colourless seal for use with Baunit Lasur paint. Also suitable for dilution of Lasur.

- For use with Baunit Lasur
- Long-term protection
- Control of colour intensity

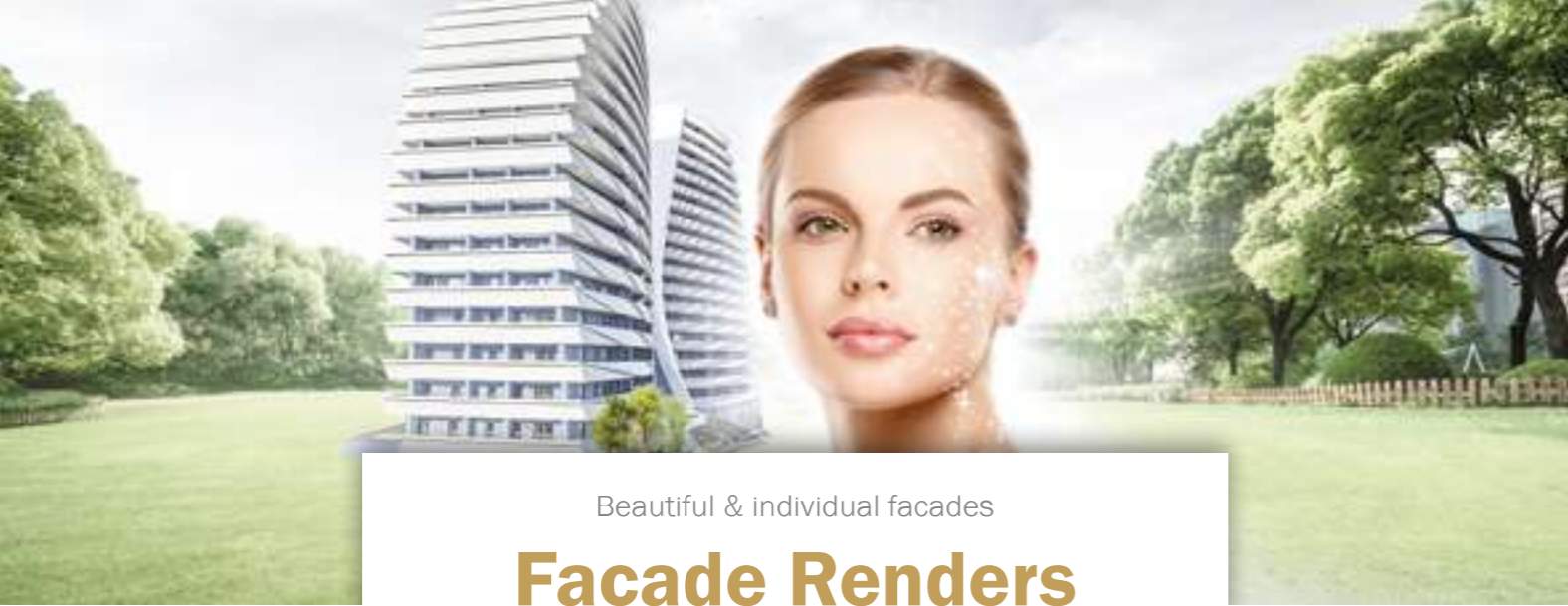
Finish	14L	5L
Consumption:	approx. 0.10-0.15 l/m ²	approx. 0.08-0.1 l/m ²
Yield:	pprox. 140-175 m ² /bucket	pprox. 50-62 m ² /bucket
Packaging:	14 l bucket, 1 pallet 32 buckets = 448 l	5 l bucket, 1 pallet 64 buckets = 320 l



Unique Facades with Baunit Effect Paints



- Metallic
- Natural stone, concrete, wood
- Special effects



Beautiful & individual facades

Facade Renders

PREMIUM FACADE RENDERS



Baunit CrystalSet **NEW**

Baunit CrystalTop & CrystalActivator

- Natural & Breathable
- Anti-Dust & Anti-Greying
- Extremely durable

The innovative Baunit CrystalSet consists of the first ready-to-use mineral topcoat CrystalTop combined with its associated primer – the Baunit CrystalActivator, which is used as a regular façade primer offering greatly improved processing properties. Combining both products is essential to start the formation of the self-contained and solid surface which reveals the unique CrystalEffect offering premium dirt resistance. This distinctive union of Top and Activator guarantees your façades long-lasting beauty, sheen and cleanliness. The Baunit CrystalSet is natural, breathable and extremely durable.



CrystalEffect

The secret of Baunit's CrystalSet is the exclusive CrystalEffect that leads to an unbeatable surface finish. This effect makes Baunit CrystalSet not only particularly breathable but also extremely long lasting and durable. Its crystalline surface features highest anti-dust and anti-greying properties due to its solid mineral binder which is non thermoplastic and therefore unsusceptible to high temperatures. This leads to long lasting beauty, sheen and cleanliness of your facade.

PREMIUM FACADE RENDERS



Baunit CrystalTop

Baunit CrystalTop is the render finish of the Baunit CrystalSet. Its unique surface is natural, breathable and due to the CrystalEffect especially dirt resistant and highly durable.

- Natural & Breathable
- Anti-Dust & Anti-Greying
- Extremely durable



CrystalTop	K 2.0 mm
Consumption:	approx. 2.9 kg/m ²
Yield:	approx. 8.6 m ² /bucket
Packaging:	25 kg bucket, 1 pallet 32 buckets = 800 kg

CrystalTop	K 1.5 mm
Consumption:	approx. 2.5 kg/m ²
Yield:	approx. 10 m ² /bucket
Packaging:	25 kg bucket, 1 pallet 32 buckets = 800 kg

CrystalTop	K 3.0 mm
Consumption:	approx. 3.9 kg/m ²
Yield:	approx. 6.4 m ² /bucket
Packaging:	25 kg bucket, 1 pallet 32 buckets = 800 kg

CrystalTop	K 1.0 mm
Consumption:	approx. 2.0 kg/m ²
Yield:	approx. 12.5 m ² /bucket
Packaging:	25 kg bucket, 1 pallet 32 buckets = 800 kg

CrystalTop	R 3.0 mm
Consumption:	approx. 2.6 kg/m ²
Yield:	approx. 9.6 m ² /bucket
Packaging:	25 kg bucket, 1 pallet 32 buckets = 800 kg

Acade Primer



Baunit CrystalActivator

Baunit CrystalActivator is the first component of the Baunit CrystalSet. It is essential to be used as substrate preparation underneath Baunit CrystalTop. Its especially great processing properties make it easy to work with.

CrystalActivator	20 kg
Consumption:	approx. 0.2 kg/m ²
Yield:	approx. 100 m ² /bucket
Packaging:	20 kg bucket, 1 pallet 32 buckets = 640 kg

2/2

1/2

PROFESSIONAL FACADE RENDERS



Baumit StarTop

Highly weather-resistant facade render with silicone binder and new functional filler. The all new Drypor effect guarantees a quick-drying facade surface after rain, fog and condensation.

- Fast drying surfaces
- Increased protection against algae
- Perfect application

StarTop K 2.0 mm

Consumption: approx. 2.9 kg/m²
 Yield: approx. 8.6 m²/bucket
 Packaging: 25 kg bucket, 1 pallet 32 buckets = 800 kg

StarTop K 1.5 mm

Consumption: approx. 2.5 kg/m²
 Yield: approx. 10 m²/bucket
 Packaging: 25 kg bucket, 1 pallet 32 buckets = 800 kg

StarTop K 3.0 mm

Consumption: approx. 3.9 kg/m²
 Yield: approx. 6.4 m²/bucket
 Packaging: 25 kg bucket, 1 pallet 32 buckets = 800 kg

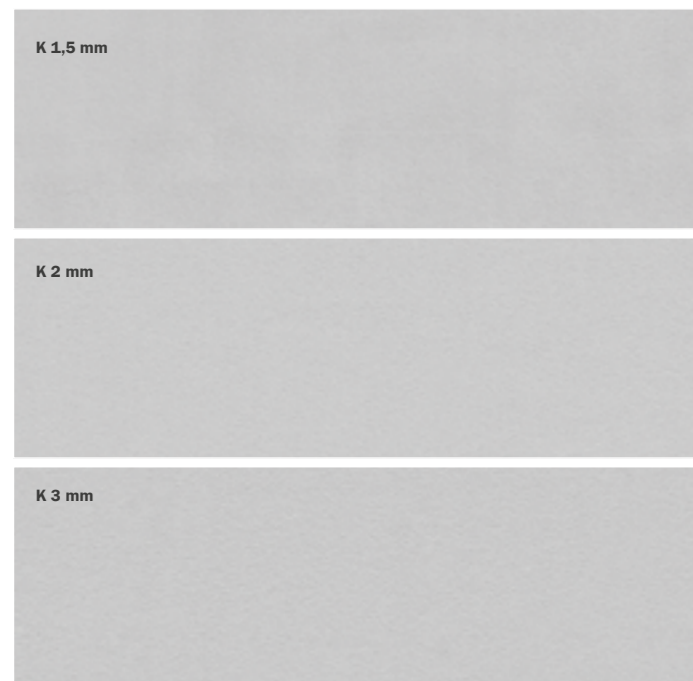
StarTop R 2.0 mm

Consumption: approx. 2.6 kg/m²
 Yield: approx. 9.6 m²/bucket
 Packaging: 25 kg bucket, 1 pallet 32 buckets = 800 kg

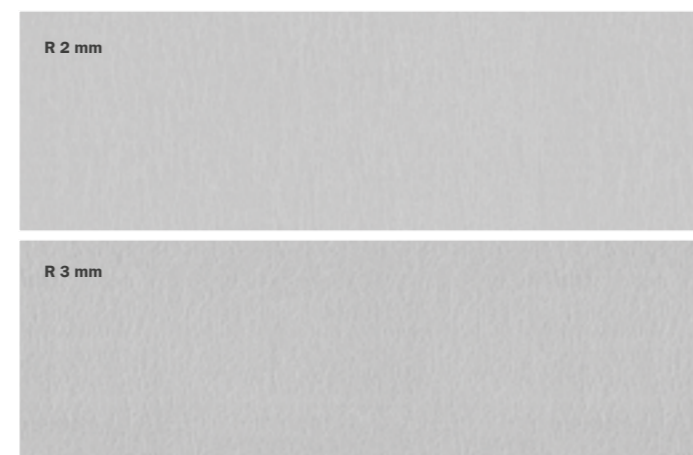
StarTop R 3.0 mm

Consumption: approx. 3.6 kg/m²
 Yield: approx. 6.9 m²/bucket
 Packaging: 5 kg bucket, 1 pallet 32 buckets = 800 kg

GRAIN TEXTURE



LINE TEXTURE



PROFESSIONAL FACADE RENDERS



Baumit PuraTop

High quality pure acrylic facade render with very good application properties. Use when requiring more intense colors, for a rich long lasting color finish.

- Unlimited color range
- Intense color tones
- Cool pigments technology

PuraTop K 2.0 mm

Consumption: approx. 2.9 kg/m²
 Yield: approx. 8.6 m²/bucke
 Packaging: 25 kg bucket, 1 pallet 32 buckets = 800 kg

PuraTop K 1.5 mm

Consumption: approx. 2.5 kg/m²
 Yield: approx. 10 m²/bucke
 Packaging: 25 kg bucket, 1 pallet 32 buckets = 800 kg

PuraTop K 3.0 mm

Consumption: approx. 3.9 kg/m²
 Yield: approx. 6.4 m²/bucke
 Packaging: 25 kg bucket, 1 pallet 32 buckets = 800 kg

PuraTop R 2.0 mm

Consumption: approx. 2.6 kg/m²
 Yield: approx. 9.6 m²/bucke
 Packaging: 25 kg bucket, 1 pallet 32 buckets = 800 kg

PuraTop K 3.0 mm

Consumption: approx. 3.6 kg/m²
 Yield: approx. 6.9 m²/bucke
 Packaging: 25 kg bucket, 1 pallet 32 buckets = 800 kg



Baumit FineTop

Ready-to-use, pasty finishing plaster based on silicone resin for window and door frames as well as decorative elements.

Maximum grain size 1 mm.

- For window and door frames
- Fine scratched structure
- Easy application

FineTop

Consumption: approx. 2 kg/m²
 Yield: approx. 12.5 m²/bucke
 Packaging: 25 kg bucket, 1 pallet 32 buckets = 800 kg

PROFESSIONAL FACADE RENDERS



Baunit GranoporTop

Universal, ready to use acrylic façade render, suitable for most requirements.

- Weather resistant
- Vapour permeable
- Water repellent



GranoporTop K 2.0 mm

Consumption: approx. 3.3 kg/m²
 Yield: approx. 7.2 m²/bucket
 Packaging: 25 kg bucket, 1 pallet 24 buckets = 600 kg

GranoporTop K 1.5 mm

Consumption: approx. 2.5 kg/m²
 Yield: approx. 9.3 m²/bucket
 Packaging: 25 kg bucket, 1 pallet 24 buckets = 600 kg

GranoporTop K 3.0 mm

Consumption: approx. 4.2 kg/m²
 Yield: approx. 5.7 m²/bucket
 Packaging: 25 kg bucket, 1 pallet 24 buckets = 600 kg

GranoporTop R 2.0 mm

Consumption: approx. 2.7 kg/m²
 Yield: approx. 8.3 m²/bucket
 Packaging: 25 kg bucket, 1 pallet 24 buckets = 600 kg

GranoporTop K 3.0 mm

Consumption: approx. 3.8 kg/m²
 Yield: approx. 6.3 m²/bucket
 Packaging: 25 kg bucket, 1 pallet 24 buckets = 600 kg



Baunit DuoTop

Acrylic based, ready to use facade render.

- Long lasting
- Labour and time efficient
- Economic

DuoTop K 2.0 mm

Consumption: approx. 3.3 kg/m²
 Yield: approx. 7.2 m²/bucket
 Packaging: 25 kg bucket, 1 pallet 24 buckets = 600 kg

DuoTop K 1.5 mm

Consumption: approx. 2.5 kg/m²
 Yield: approx. 9.3 m²/bucket
 Packaging: 25 kg bucket, 1 pallet 24 buckets = 600 kg

DuoTop K 3.0 mm

Consumption: approx. 4.2 kg/m²
 Yield: approx. 5.7 m²/bucket
 Packaging: 25 kg bucket, 1 pallet 24 buckets = 600 kg

DuoTop R 2.0 mm

Consumption: approx. 2.7 kg/m²
 Yield: approx. 8.3 m²/bucket
 Packaging: 25 kg bucket, 1 pallet 24 buckets = 600 kg

DuoTop R 3.0 mm

Consumption: approx. 3.8 kg/m²
 Yield: approx. 6.3 m²/bucket
 Packaging: 25 kg bucket, 1 pallet 24 buckets = 600 kg



2 in 1:
 Make both decorative coating and facade paint application with only one product



- Long lasting
- Labour and time efficient
- High durability



For Baunit GranoporTop ready to use facade render application video:

PROFESSIONAL FACADE RENDERS



Baumit CreativTop

Ready-to-use, highly weather-resistant, silicone-reinforced finishing render with a new, functional filler for quick re-drying facade surfaces after rain, fog and condensation. Modelable render for a creative exterior facade design. For manual or machine application.

- * Consumptions are approximate, may vary according to the selected texture, application surface and workmanship.
- * Please consult Baumit Turkey for special texture applications.

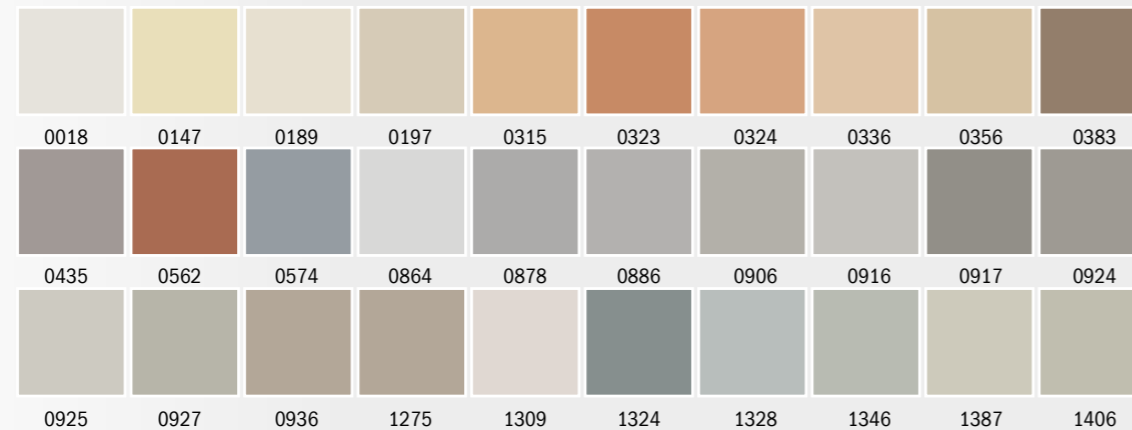
- Functional re-drying effect (Drypor)
- Unlimited design possibilities
- Improved processing properties

CreativTop Max 4.0 mm	
Consumption:	approx. 5.0-6.2 kg/m ²
Yield:	approx. 4.0-5.0 m ² /bucket
Packaging:	25 kg bucket, 1 pallet 32 buckets = 800 kg
CreativTop Trend 3.0 mm	
Consumption:	approx. 4.2-6.2 kg/m ²
Yield:	approx. 4.0-5.0 m ² /bucket
Packaging:	25 kg bucket, 1 pallet 32 buckets = 800 kg
CreativTop Vario 1.5 mm	
Consumption:	approx. 2.5-5.0 kg/m ²
Yield:	approx. 5.0-10 m ² /bucket
Packaging:	25 kg bucket, 1 pallet 32 buckets = 800 kg
CreativTop Fine 1.0 mm	
Consumption:	approx. 2.9-4.2 kg/m ²
Yield:	approx. 5.9-8.6 m ² /bucket
Packaging:	25 kg bucket, 1 pallet 32 buckets = 800 kg
CreativTop Pearl 0.5 mm	
Consumption:	approx. 1.5-3.5 kg/m ²
Yield:	approx. 7.1-16.7 m ² /bucket
Packaging:	25 kg bucket, 1 pallet 32 buckets = 800 kg
CreativTop Silk 0.2 mm	
Consumption:	approx. 2.4-4.0 kg/m ²
Yield:	approx. 6.25-10 m ² /bucket
Packaging:	25 kg bucket, 1 pallet 32 buckets = 800 kg

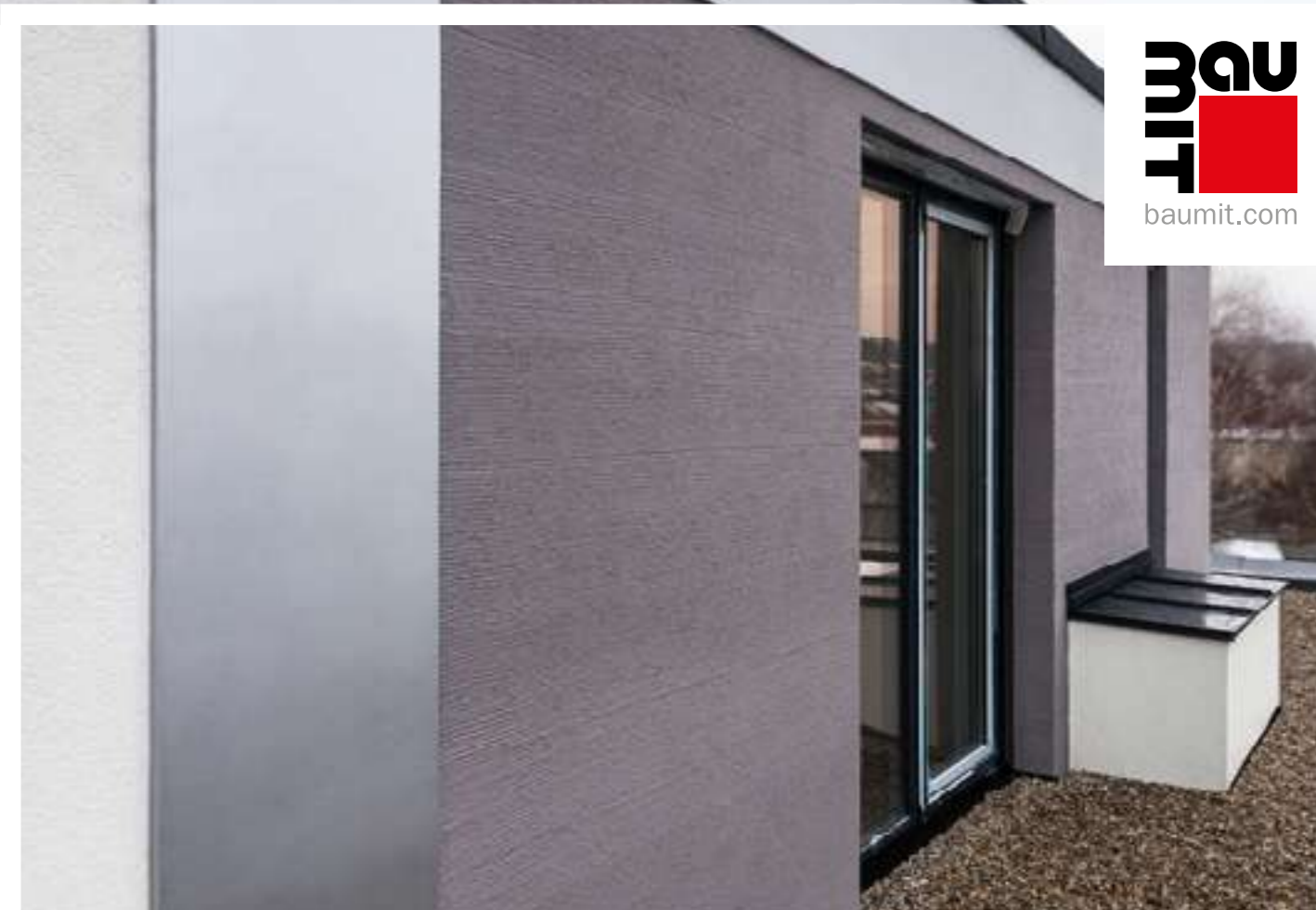
NEW

30 NEW SHADES FOR A SMOOTH SURFACE APPEARANCE

In order to obtain smooth surfaces on facades, Baumit CreativTop Silk product can be produced and applied as self-colored in 30 color tones from Baumit Life Color System. Thus, a self-colored and smooth surface is obtained and exterior paint can be applied on it, it won't be necessary.

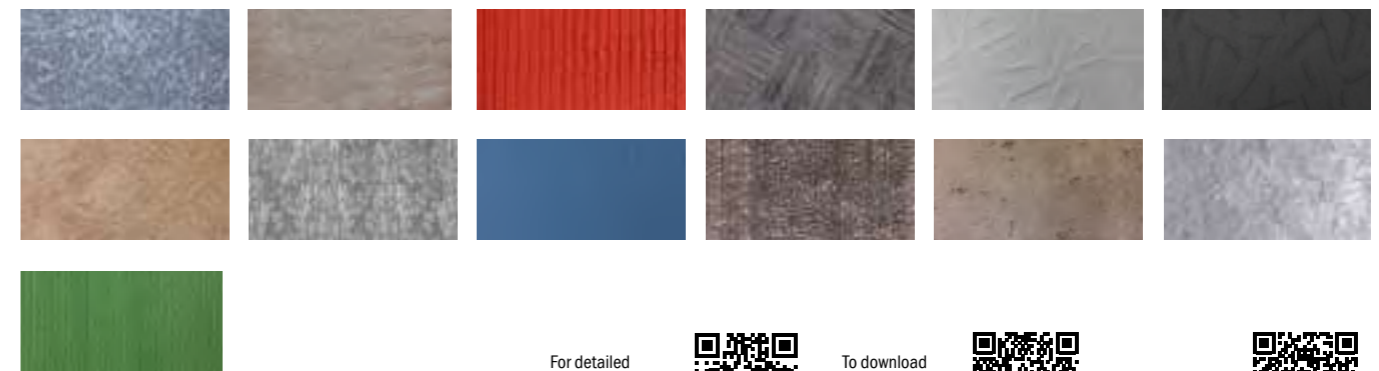


* The self-colored Baumit CreativTop Silk surface shows a color tone difference in sanded and unsanded applications. You can obtain original sample color swatches for both applications from Baumit Turkey.



Special and unique texture and color options that reveal the unique character of facades and give designers unlimited freedom

With Baumit DesignLife, it is possible!



For detailed information about Baumit DesignLife textures:



To download the Baumit DesignLife texture library:



For Baumit DesignLife texture application videos:



PROFESSIONAL FACADE RENDERS



Baunit MosaikTop

Ready-to-use, acrylic based render for external use. Coloured quartz sand specifically designed for use at a buildings splash zone and for individual design elements.

- Coated and colored quartz sand
- Natural and authentic stone look
- Highly shockproof



MosaikTop - Natural Line

Consumption:	approx. 4.5 kg/m ²
Yield:	approx. 5.5 m ² /bucket
Packaging:	25 kg bucket, 1 pallet 32 buckets = 800 kg

MosaikTop - Essential Line

Consumption:	approx. 5.5 kg/m ²
Yield:	approx. 4.5 m ² /bucket
Packaging:	25 kg bucket, 1 pallet 32 buckets = 800 kg

MOSAİK – NATURAL LINE



M 337 Montblanc



M338 Olympus



M 339 Castle



M 340 Babia



M 341 Rocky



M 342 Everest



M 343 Etna



M 344 Vesuvius

• Can be used on ETICS only with a double reinforcement layer (minimum thickness 5mm) according to the product datasheet.

MOSAİK – ESSENTIAL LINE



M 301 Albaron



M 302 Monviso



M 303 Matterhorn



M 304 Denali



M 305 Victoria



M 306 Parnass



M 307 Bistra



M 308 Kope



M 312 Cook



M 313 Athos



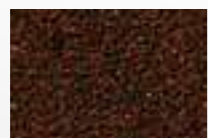
M 314 Ararat



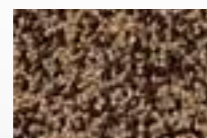
M 315 Rodna



M 316 Kosh



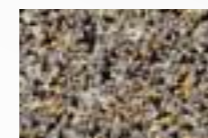
M 317 El Capitan



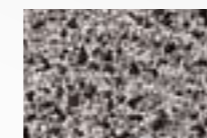
M 318 Rax



M 325 Bellavista



M 326 Triglav



M 327 Rushmore



M 328 Durano



M 329 Cristallo



M 330 Elbrus



M 331 Nemrub

All color samples shown here serve as a visual orientation for the selected product. Slight deviations between the colors shown here, color samples, color folders, natural patterns and the materials provided are production-related possible and can not be claimed. The uniformity of color and texture can only be guaranteed within one production batch.

• Can be used on ETICS only with a double reinforcement layer (minimum thickness 5mm) according to the product datasheet.



Baunit MosaikTop



Baunit MosaikTop special mosaic plaster provides a natural stone appearance on facades with its natural quartz aggregates, mica flakes and 30 different color options.

- **Natural stone effect**
- **Two different texture series**
- **High impact resistance**
- **Fast and easy application**

CLASSIC RENDER FINISHES



openFascina

White cement based, high water repellent, highly breathable, grain textured mineral coating reinforced with polymers.

- Long lasting
- Breathable
- Best with Baumit openSystem

O
E
M
I
P

openFascina K 2.0 mm

Consumption: approx. 2.5 kg/m²
Yield: approx. 10 m²/bucket
Packaging: 25 kg bag, 1 pallet 60 bag = 1500 kg

openFascina K 1.5 mm

Consumption: approx. 2.3 kg/m²
Yield: approx. 11 m²/bucket
Packaging: 25 kg bag, 1 pallet 60 bag = 1500 kg



Baumit Classico Special

Mineral facade protection and design, water-repellent and vapor diffusion-open thin-layer colored render for outside and inside. Baumit Classico Special is also suitable for Baumit ETIC systems.

- Suitable for ETICS
- Mineralic
- Perfect with Baumit Colors

E
M
P

Classico Special K 2.0 mm

Consumption: approx. 2.5 kg/m²
Yield: approx. 10 m²/bucket
Packaging: 25 kg bag, 1 pallet 60 bag = 1500 kg

Classico Special Rille R 2.0 mm

Consumption: approx. 2.5 kg/m²
Yield: approx. 10 m²/bucket
Packaging: 25 kg bag, 1 pallet 60 bag = 1500 kg



Baumit Classico Fine

Mineral facade protection and design, water-repellent and vapor diffusion-open, thin structure render for outside and inside. Baumit Classico Fine is also suitable for Baumit ETIC systems.

- Thin grain texture
- Mineral based
- Perfect with Baumit Colors

E
M
P

Classico Fine K 1.5 mm

Consumption: approx. 2.3 kg/m²
Yield: approx. 11 m²/bucket
Packaging: 25 kg bag, 1 pallet 60 bag = 1500 kg



Baumit
academy
ON THE ROADS

- **Trainings with technical information**
- **Interactive applications**
- **Supporting the development of construction industry professionals**



To request training



Substrate Preparation
Primers

In order to achieve a permanent coating, it is important to optimally access the substrate. Whether ETICS or plaster or flooring, every substrate needs the right pre-treatment. Perfect results on facades and interior walls can only be achieved if the substrate conditions are suitable. Our pre-treatment products create the best conditions for beautiful and long-lasting results.

	PremiumPrimer	UniPrimer	SuperPrimer	Grund
	Pre-Coating Primer		Bright and Smooth Surface Primer	Absorbency Stabilizing Primer
Usage	Can be used in all buildings and exterior facades. It is used to stabilize absorbency and increase adhesion before topcoating on ETICS plasters.		It can be used in all buildings, indoors and outdoors, in horizontal and vertical applications. It is used to increase the adhesion strength before the application of cement, lime/cement, lime and gypsum based plasters, screeds and self-leveling screeds, especially on smooth, non-absorbent, glossy, difficult to adhere substrates such as concrete. It can be used to increase adhesion before tile adhesive to be applied in tile-on-tile bonding applications.	Used indoors on substrates such as brick, aerated concrete, screed and concrete, self-leveling screeds (calcium sulphate and cement based), to stabilize surface absorbency before gypsum and cement based plaster applications.
Application	ready to use It can be diluted with a maximum of 5% water.	ready to use It can be diluted with a minimum amount of water to allow the roll to spin.	eady to use Do not dilute with water.	Ready to use. It can be diluted with water 1:2 - 1:3 before gypsum based plaster applications * 1:6 before lime/cement based plaster applications. *Do not dilute with water before Baumit Nivello applications.
Shade	white, can be colored,	Beige	yellow	Blue
Certificate				
Benefits	<ul style="list-style-type: none"> ■ Absorption regulator ■ Ideal bonding agent ■ For a perfect structure 	<ul style="list-style-type: none"> ■ Regulates absorption ■ Proven and safe ■ Solvent-free 	<ul style="list-style-type: none"> ■ Universal adhesive bridge ■ Especially for weak and non-absorbent surfaces ■ Solvent-free 	<ul style="list-style-type: none"> ■ Absorbency stabilizer ■ High penetration ■ Wide range of applications

	BetonKontakt	EasyPrimer	FillPrimer
	Concrete Surface Primer	Absorbent and Dusting Surface Primer	Crack Filling Primer
Usage	Can be used on all structures, interior and exterior facades. It is used on smooth concrete surfaces with low absorbency to stabilize absorbency and increase adhesion before gypsum and cement based machine plasters.	Can be used on all structures, interior and exterior facades. It is used on highly absorbent and dusty surfaces to stabilize absorbency and strengthen the surface before paint and putty applications.	It can be used in all buildings, interior and exterior facades. It is used on mineral and organic substrates (plasters, concrete) in old and new buildings, before the application of mineral and organic plasters and paints, especially for repairing capillary cracks in ETICS.
Application	Ready to use Do not dilute with water.	Ready for use. Can be diluted with water at a maximum ratio of 1:2 for interior facades and less absorbent surfaces.	Ready to use Do not dilute with water.
Shade	Pink	Transparent	White
Certificate			
Benefits	<ul style="list-style-type: none"> ■ For concrete substrates ■ For Baumit Gypsum Plasters ■ Solvent-free 	<ul style="list-style-type: none"> ■ For absorbent and chalking surfaces ■ For absorbent and chalking surfaces ■ Solvent-free 	<ul style="list-style-type: none"> ■ Crack-filling ■ Fiber-reinforced ■ Solvent free



Substrate Treatment
Primers

PRIMERS



Baumit PremiumPrimer

Ready-to-use, universally usable primer to equalize absorption and acts as bonding agent for all Baumit ETIC- and plaster systems. The added grain makes it easier to apply and structure all top coats. Can be colored.

- Excellent absorption equalizer
- Ideal bonding agent
- For a perfect structure



PremiumPrimer

Consumption: approx. 0.2-0.4 kg/m² depending on the substrate
Yield: approx. 50-100 m²/bucket
Packaging: 20 kg bucket, 1 pallet 32 buckets = 640 kg



Baumit UniPrimer

Ready-to-use, all-purpose primer to regulate absorption and improve adhesion for all Baumit render finishes and Baumit facade paints.

- Regulates absorption
- Proven and safe
- Solvent-free



UniPrimer 25 kg

Consumption: approx. 0.1-0.2 kg/m² depending on the substrate
Yield: approx. 125-250 m²/bucket
Packaging: 20 kg bucket, 1 pallet 32 buckets = 640 kg

UniPrimer 5 kg

Consumption: approx. 0.1-0.2 kg/m² depending on the substrate
Yield: approx. 25-50 m²/bucket
Packaging: 5 kg bucket, 1 pallet 90 buckets = 450 kg

PRIMERS



Baumit FillPrimer

Ready-to-use, crack-filling, fiber-reinforced, universal primer for outside and inside. Fills and covers cracks up to 0.5 mm. Solvent free.

- Crack-filling
- Fiber-reinforced
- Solvent free



FillPrimer

Consumption: approx. 0.3 kg/m² on smooth surfaces applied in 1 layer. e
Yield: approx. 80 m²/bucket
Packaging: 25 kg bucket, 1 pallet 32 buckets = 800 kg



Baumit EasyPrimer

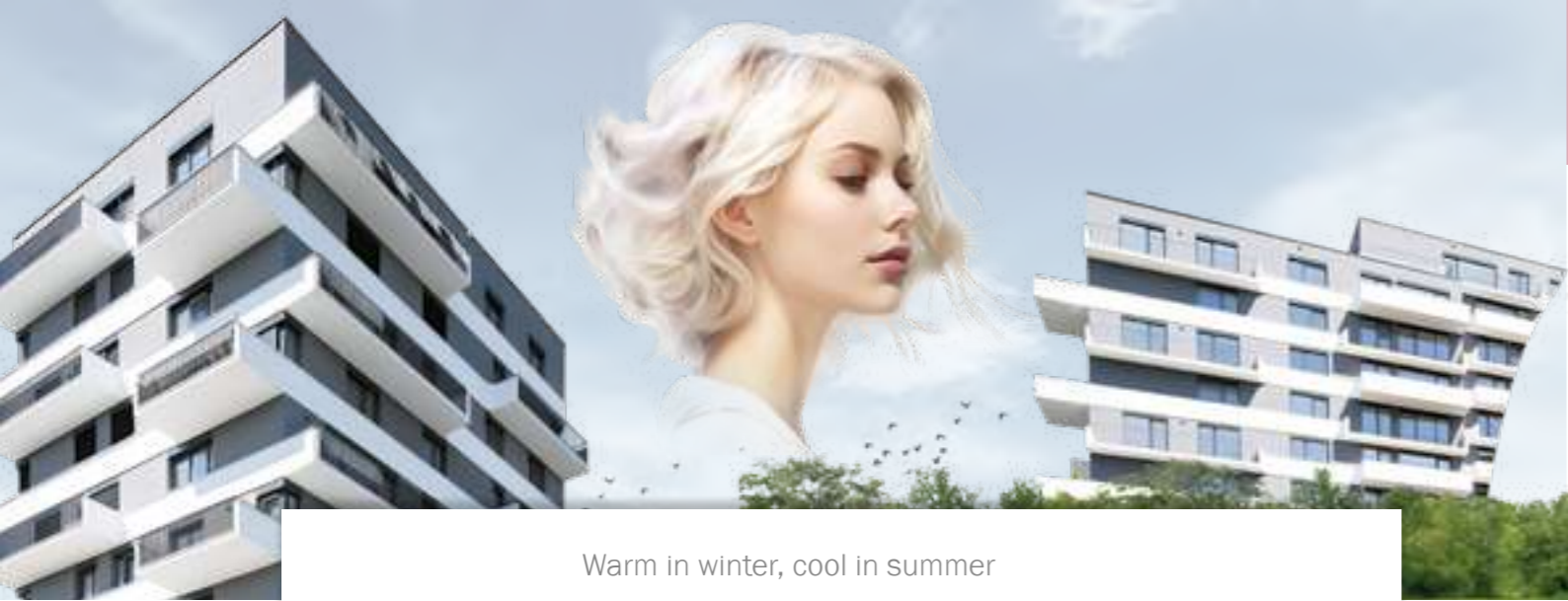
Primer used indoors and outdoors on highly absorbent and dusty surfaces to stabilize absorbency and strengthen the surface before paint and putty applications.

- For absorbent and chalking surfaces
- Open to diffusion
- Solvent-free



EasyPrimer

Consumption: approx. 0.1-0.25 l/m² for each layer
Yield: approx. 40-100 m²/canister
Packaging: 10 l canister, 1 pallet 60 canister = 600 l



Warm in winter, cool in summer

ETICS

openSystem

StarSystem EPS

StarSystem Mineral



Topcoat	CrystalTop, GranoporTop, PuraTop StarTop, MosaikTop, FineTop CreativTop Fine, Vario, Trend, Maxc	CrystalTop, GranoporTop, PuraTop StarTop, MosaikTop, FineTop CreativTop Fine, Vario, Trend, Maxc	CrystalTop, GranoporTop, PuraTop StarTop, MosaikTop, FineTop CreativTop Fine, Vario, Trend, Maxc
Primer	UniPrimer	UniPrimer	UniPrimer
Basecoat	openContact	StarContact White	StarContact White
Reinforcement	openTherm	StarTex	StarTex
Insulation Boards	openTherm	StarTherm	MineralTherm
Adhesive	openContact	StarContact White	StarContact White
Warranty			
	<ul style="list-style-type: none"> Breathable facades Comfortable and healthy indoor climate The most efficient ETICS 	<ul style="list-style-type: none"> Increased flexibility High impact resistance Wide range of uses 	<ul style="list-style-type: none"> Approved fire resistance Increased flexibility and impact resistance High breathability

Wellbeing and a healthy interior climate: these qualities convert a house to your home. The most important way to create a pleasant environment is to choose a proper thermal insulation. This will help to create a comfortable room temperature regardless day time or season.

- Low Maintenance
- Effective thermal insulation
- High energy saving
- Protection of the building structure
- Heat protection in summer
- Increase of the value of the house
- A comfortable indoor climate throughout the year
- Freedom of design & creativity
- For new building and renovation

ProSystem

PowerSystem



CrystalTop, GranoporTop, PuraTop StarTop, MosaikTop, FineTop CreativTop Fine, Vario, Trend, Maxc	CrystalTop, GranoporTop, PuraTop StarTop, MosaikTop, FineTop CreativTop Fine, Vario, Trend, Maxc
UniPrimer	UniPrimer
ProContact	PowerFlex
StarTex	StarTex
ProTherm	StarTherm
ProContact	NivoFix
<ul style="list-style-type: none"> Outstanding price performance ratio Long-lasting facades Wide range of uses 	<ul style="list-style-type: none"> High impact resistance Extraordinary flexibility Cement free



For detailed information about Baumit ETICS



Fast & Easy Adhesives & Base Coats

ADHESIVES & BASE COATS



O

Baumit openContact **NEW**

White cement based, highly breathable, flexible, highly weather resistant, high quality adhesive and plaster mortar with excellent workability. Compliant with ETAG 004. Specially developed for openSistem, creates a healthy indoor climate.

- Suitable for use as adhesive and plaster
- Highly breathable
- White

openContact	
Consumption:	As base coat: 3 mm; 4.0 - 5.0 kg/m ² As base coat: 5 mm; 7.0 - 8.0 kg/m ² As adhesive: 4.0 - 5.0 kg/m ²
Yield:	As base coat: 3 mm; 5.0 - 6.25 m ² /bag As base coat: 5 mm; 3.1 - 3.6 m ² /baga As adhesive: 5.0 - 6.25 m ² /bag
Packaging:	25 kg, 1 pallet 60 bags = 1500 kg



E M

Baumit StarContact White **NEW**

White cement based, highly flexible thanks to polymer reinforcement, highly weather resistant, excellent workability adhesive and plaster mortar that provides long-lasting performance. Compliant with ETAG 004. Specially developed for demanding substrates and weather conditions.

- Suitable for use as adhesive and plaster
- Extra flexible
- White

StarContact	
Consumption:	As base coat: 3 mm; 4.0 - 5.0 kg/m ² As base coat: 5 mm; 7.0 - 8.0 kg/m ² As adhesive: 4.0 - 5.0 kg/m ²
Yield:	As base coat: 3 mm; 5.0 - 6.25 m ² /bag As base coat: 5 mm; 3.1 - 3.6 m ² /baga As adhesive: 5.0 - 6.25 m ² /bag
Packaging:	25 kg, 1 pallet 60 bags = 1500 kg

ADHESIVES & BASE COATS



P

Baumit ProContact **NEW**

Cement based, flexible, weather resistant, adhesive and plaster mortar suitable for use under standard conditions.

- Suitable for use as adhesive and plaster
- Long-term approved
- Reliable performance

ProContact	
Consumption:	As base coat: 3 mm; 4.0 - 5.0 kg/m ² As base coat: 5 mm; 7.0 - 8.0 kg/m ² As adhesive: 4.0 - 5.0 kg/m ²
Yield:	As base coat: 3 mm; 5.0 - 6.25 m ² /bag As base coat: 5 mm; 3.1 - 3.6 m ² /baga 5.0 - 6.25 m ² /bag
Packaging:	25 kg, 1 pallet 60 bags = 1500 kg



Baumit DuoContact

Cement based, weather resistant, adhesive and plaster mortar suitable for use under standard conditions.

- Suitable for use as adhesive and plaster
- Economic
- Easy application

DuoContact	
Consumption:	As base coat: 3 mm; 4.0 - 5.0 kg/m ² As base coat: 5 mm; 7.0 - 8.0 kg/m ² As adhesive: 4.0 - 5.0 kg/m ²
Yield:	As base coat: 3 mm; 5.0 - 6.25 m ² /bag As base coat: 5 mm; 3.1 - 3.6 m ² /baga As adhesive: 5.0 - 6.25 m ² /bag
Packaging:	25 kg, 1 pallet 60 bags = 1500 kg

BASE COATS



I

Baumit PowerFlex

Ready-to-use, cement-free, fibre-reinforced, organic base coat. Specially developed for Baumit PowerSystem due to high impact resistance. Complies with all requirements of ETAG 004.

- High impact resistance
- Excellent flexibility
- Cement free

PowerFlex	
Consumption:	approx. 4.0 - 5.0 kg/m ²
Yield:	approx. 5.0 - 6.25 m ² /bucket
Packaging:	25 kg bucket, 1 pallet 32 buckets = 800 kg

BASE COATS



Baumit EasyFlex

Organic-bonded, cement-free, flexible, putty-like, ready-to-use, ready-to-use thermal insulation plate plaster. Complies with all requirements of ETAG 004.

- Excellent flexibility
- Resistant to mechanical stress
- Cement free

EasyFlex

Consumption:	approx. 4.0 - 5.0 kg/m ²
Yield:	approx. 5.0 - 6.25 m ² /bucket
Packaging:	25 kg bucket, 1 pallet 32 buckets = 800 kg

ADHESIVES



Baumit NivoFix

Organic-bonded, cement-free, flexible, putty-like, ready-to-use, ready-to-use thermal insulation plate plaster. Complies with all requirements of ETAG 004.

- High bond strength
- Reliable performance
- Wide range of applications

NivoFix

Consumption:	approx. 4.0 - 5.0 kg/m ²
Yield:	approx. 5.0 - 6.25 m ² /bucket
Packaging:	25 kg bag, 1 pallet 60 bags = 1500 kg



Baumit DuoFix

Cement based, powder form, adhesive mortar used for bonding all thermal insulation plates.

- High bond strength
- Easy application
- Economic

DuoFix

Consumption:	approx. 4.0 - 5.0 kg/m ²
Yield:	approx. 5.0 - 6.25 m ² /bucket
Packaging:	25 kg bag, 1 pallet 60 bags = 1500 kg



Baumit DispoFix

Ready-to-use dispersion adhesive for extra strong adhesion of EPS, phenolic or mineral wool insulation boards.

- Ready to use
- For wooden surfaces
- High adhesion strength

DispoFix

Consumption:	approx. 1.5 - 2.5 kg/m ²
Yield:	approx. 10 - 16.5 m ² /bucket
Packaging:	25 kg bucket, 1 pallet 32 buckets = 800 kg



The Most Professional Results

Insulation Boards

EPS INSULATION BOARD



Baumit openTherm

Carbon reinforced, polystyrene raw material, expanded heat insulation plate with high diffusion capability. Thanks to the existing channels on the plate, it allows the passage of water vapor, and the stagnant air trapped in the plate after the bonding and plastering process is completed supports the improvement of the thermal insulation capability. openTherm is the ideal insulation plate of Baumit open Facade Thermal Insulation System.

openTherm

Thermal conductivity*: $\lambda = 0,031 \text{ W/mK}$



Baumit StarTherm

Expanded thermal insulation plate made of polystyrene raw material with carbon reinforcement. Thermal insulation capability is increased thanks to carbon reinforcement.

StarTherm

Thermal conductivity*: $\lambda = 0,032 \text{ W/mK}$



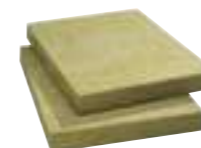
Baumit ProTherm

White colored, expanded heat insulation plate made of polystyrene raw material.

ProTherm

Thermal conductivity*: $\lambda = 0,040 \text{ W/mK}$

MINERAL WOOL INSULATION BOARD



Baumit MineralTherm

Fireproof, rockwool thermal insulation plate made of mineral wool. Thanks to its water repellent properties, it is suitable for safe use on exterior facades. It breathes perfectly thanks to its fibrous texture.

MineralTherm

Thermal conductivity*: $\lambda = 0,036 \text{ W/mK}$

* Based on manufacturer's declarations. It may vary.

Baumit Components

Fixings & Meshes

MESHES



Baunit StarTex

Alkaline resistant glass fiber reinforcement mesh specially produced for Baumit ETIC- Systems.

StarTex

Mesh size:	approx. 4 x 4 mm, width: 100 cm
Consumption:	1.1 mtül/m ² area
Yield:	approx. 45 m ² /roll
Packaging:	1 roll = 50 m ² , 1 pallet = 30 rolls

STARTRACK



Baunit StarTrack X1

Additional mechanical anchor for concrete surfaces, an alternative to conventional anchoring. Thanks to the powder-actuated tool supported by Hilti, there is no need to drill and fasten the anchor separately. Simply apply Baunit StarTrack X1 in one step.

StarTrack X1

Area of application:	Concrete
Category of use:	A
Consumption:	approx. 6 units for 1 m ²
Yield:	50 m ² /box
Packaging:	1 box = 300 units, 1 pallet = 12 boxes = 3600 units



Baunit StarTrack Orange

Additional mechanical anchor alternative to conventional anchoring for existing aerated concrete, perforated brick and critical surfaces

StarTrack Orange

Anchor length:	Carrier surface ≥ 40 mm, Aerated concrete ≥ 65 mm
Area of application:	Concrete, solid brick, perforated brick, aerated concrete
Category of use:	A, B, C, E
Consumption:	approx. 6 units for 1 m ²
Yield:	50 m ² /box
Packaging:	1 Box = 300 units, 1 pallet = 12 boxes = 3600 units



Baunit StarTrack Red

Additional mechanical anchor alternative to conventional anchoring for existing old plastered surfaces.

StarTrack Red

Anchor length:	Carrier surface ≥ 40 mm
Area of application:	Concrete, solid brick, perforated brick
Category of use:	A, B, C
Consumption:	approx. 6 units for 1 m ²
Yield:	50 m ² /box
Packaging:	1 Box = 300 units, 1 pallet = 12 boxes = 3600 units



Baunit StarTrack Blue

Additional mechanical anchor alternative to conventional anchoring for existing unplastered and concrete surfaces.

StarTrack Blue

Anchor length:	Carrier surface ≥ 40 mm, Aerated concrete ≥ 65 mm
Area of application:	Concrete, solid brick, perforated brick, aerated concrete
Category of use:	A, B, C, E
Consumption:	approx. 6 units for 1 m ²
Yield:	50 m ² /box
Packaging:	1 Box = 300 units, 1 pallet = 12 boxes = 3600 units

THERMAL INSULATION ANCHORS



Baumit Mechanical Claw Anchor - Steel Studded

Standard anchor with steel nails, suitable for all insulation plates

Anchorage length to the carrier floor: ≥ 50 mm
 Area of application :Aerated concrete, hollow and perforated brick
 Category of use : C, D
 Hole diameter : 9 mm

Washer diameter : 60 mm
 Anchor sleeve : Polyethylene body
 Consumption : Approximately 6 units is for 1 m²

Minimum order quantity= 1 box
95 mm / 500 units in 1 box
115 mm / 500 units in 1 box
135 mm / 500 units in 1 box
155 mm / 500 units in 1 box



Baumit Mechanical Claw Anchor - Plastic Studded

Standard anchor with plastic nails with mechanical claw, suitable for all insulation plates.

Anchorage length to the carrier floor: 40 mm
 Area of application :Aerated concrete, hollow and perforated brick
 Category of use : C, D
 Hole diameter : 9 mm

Washer diameter : 60 mm
 Anchor sleeve : Polyamide nail, Polyethylene body
 Consumption : Approximately 6 pieces are used for 1 m².

Minimum order quantity= 1 box
95 mm / 500 units in 1 box
115 mm / 500 units in 1 box
135 mm / 500 units in 1 box
155 mm / 500 units in 1 box



Baumit Uni Anchor

Standard anchor with plastic nails, suitable for all insulation plates.

Anchorage length to supporting floor : 50 mm
 Area of application : Hollow brick and solid surfaces
 Category of use : A, B, C
 Hole diameter : Hollow wall 10 mm, solid wall 11 mm

Washer diameter : 60 mm
 Anchor sleeve : Polyamide nail, Polyethylene body
 Consumption : Approximately 6 pieces are used for 1 m².

Minimum order quantity= 1 box
100 mm / 500 units in 1 box
120 mm / 500 units in 1 box
140 mm / 500 units in 1 box
160 mm / 500 units in 1 box

THERMAL INSULATION ANCHORS



Baumit Special Claw Aerated Concrete Anchor

Anchor used in applications of thermal insulation plates on aerated concrete.

Anchorage length to the carrier floor: ≥ 50 mm
 Area of application : Aerated concrete
 Category of use : D
 Hole diameter : 11 mm

Washer diameter : 60 mm
 Anchor sleeve : Polyamide nail, Polyethylene body
 Consumption : Approximately 6 pieces are used for 1 m².

Minimum order quantity= 1 box
100 mm / 500 units in 1 box
140 mm / 500 units in 1 box



Baumit Screwed Wood Anchor

Screwed anchor for mechanical fitting of thermal insulation boards to the wooden surface
 Can be applied on wood fiberboard concrete boards

Anchorage length to the carrier floor: 20 mm
 Area of application :Wood
 Category of use : E

Washer diameter : 60 mm
 Consumption : Approximately 6 pieces are used for 1 m².

Minimum order quantity= 1 box
60 mm / 1000 units in 1 box



Baumit Anchor Slot Opening Tool

It is used for embedding the anchors used in the mechanical assembly of all insulation plates into the insulation plate.

Sleeve Diameter: 60 mm



Baumit Wide Cap Rock Wool Anchor - Steel Nailed

Wide capped anchor with Euro steel nails, suitable for rock wool boards. Complies with EOTA ETAG 014 and TSE quality and standards.

Anchorage length to the carrier floor: ≥ 50 mm
 Area of application : Aerated concrete, hollow and perforated brick
 Hole diameter: Hollow wall 9 mm, Filled wall 10 mm
 Dowel sleeve: Polyamide nail, Polyethylene body
 Category of use: A, B, C, D
 Washer Diameter: 85 mm
 Consumption : Approximately 6 units for 1 m²

Minimum order quantity= 1 box
115 mm / 500 units in 1 box
135 mm / 500 units in 1 box
155 mm / 500 units in 1 box



Baumit Components
Accessories

THERMAL INSULATION PROFILES



Baumit PVC Corner Profile-With Mesh

Alkali resistant, made of PVC raw material, perfectly compatible with the substrate, mesh corner reinforcement profile.

Baumit PVC Corner Profile-With Mesh

Reinforcement width: 10 x 10 cm
Packaging: 1 tie = 2.5 m, 1 bundle = 50 ties
Yield: approx. 125 lineer meters/bundle



Baumit PVC Corner Profile-Without Mesh

Corner profile made of PVC used for reinforcing edges and corners.

Baumit PVC Corner Profile-Without Mesh

Packaging: 1 tie = 2.5 m, 1 bundle = 100 ties
Yield: approx. 250 lineer meters/bundle



Baumit Aluminum Corner Profile - With Mesh

Corner reinforcement profile made of aluminum, used for reinforcing edges and corners.

Baumit Aluminum Corner Profile - With Mesh

Reinforcement width: 10 x 10 cm
Packaging: 1 tie = 2.7 m, 1 bundle = 25 ties
Yield: approx. 67.5 lineer meters/bundle

THERMAL INSULATION PROFILES



Baumit Aluminum Corner Profile - Without Mesh

Corner profile made of aluminum used for reinforcing edges and corners.

Baumit Aluminum Corner Profile - Without Mesh

Packaging: 1 tie = 2.5 m, 1 bundle = 50 ties
Yield: approx. 125 lineer meters/bundle



Baumit PVC Console Profile with Dropper - With Mesh

PVC console profile with dropper and mesh used in recessed facades, window shutter frame ends, balconies, horizontal cladding and console endings, etc.

Baumit PVC Console Profile with Dropper- With Mesh

Reinforcement width: 8 x 8 cm
Packaging: 1 tie = 2.5 m, 1 bundle = 50 ties
Yield: approx. 125 lineer meters/bundle



Baumit PVC Console Profile with Dropper - Without Mesh

PVC console profile with dropper and mesh used in recessed facades, window shutter frame ends, balconies, horizontal cladding and console endings, etc.

Baumit PVC Console Profile with Dropper- Without Mesh

Packaging: 1 length = 2.5 m, 1 bag = 50 lengths
Yield: approx. 125 mtül/bag



Baumit Aluminum Console Profile with Dropper - Without mesh

Aluminum console profile with dropper and mesh used in recessed facades, window shutter frame ends, balconies, horizontal cladding and console endings, etc.

Baumit Aluminum Console Profile with Dropper-Without mesh

Steel thickness: 0.40 mm
Packaging: 1 tie = 2.5 m, 1 bundle = 30 ties
Yield: approx. 75 lineer meters/bundle



Baumit Angled PVC Corner Profile - Mesh

Angled corner profile with reinforcing mesh, made of PVC raw material, for use in corners with angles smaller or larger than 90°.

Baumit Angled PVC Corner Profile - Mesh

Reinforcement width: 10 x 10 cm
Packaging: 1 tie = 2.5 m, 1 bundle = 50 ties
Yield: approx. 125 lineer meters/bundle

THERMAL INSULATION PROFILES

**Baumit Aluminum Base Profile**

Aluminum duct-shaped base profile with dropper and upward extension that allows the insulation system to be fixed to the subsoil. 250 cm long, thickness may vary depending on the thickness of the insulation plate.

Baumit Aluminum Base Profile

Packaging: 1 tie = 2.5 m, 1 bundle = 10 ties
Yield: approx. 25 lineer meters/bundle

**Baumit V-Form Expansion Joint Profile**

Expansion joint profile with (90°) reinforcing mesh for wall surfaces. Used for insulation of building expansion joints.

Baumit V-Form Expansion Joint Profile

Reinforcement width: 2 x 12,5 cm
Joint width: 5-25 mm
Packaging: 1 tie = 2.5 m, 1 bundle = 25 ties
Yield: approx. 62.5 lineer meters/bundle

**Baumit E-Form Expansion Joint Profile**

Expansion joint profile with (180°) reinforcing mesh for wall surfaces. Used for insulation of building expansion joints.

Baumit E-Form Expansion Joint Profile

Reinforcement width: 2 x 12,5 cm
Joint width: 5-25 mm
Packaging: 1 tie = 2.5 m, 1 bundle = 25 ties
Yield: approx. 62.5 lineer meters/bundle

**Baumit Window and Door Connection Profile - Standard**

Self-adhesive white plastic profile with sealing tape and reinforcing mesh. Recommended for insulation materials narrower than 12 cm. Completely impermeable

Baumit Window and Door Connection Profile - Standard

Reinforcement width: 12,5 cm
Packaging: 1 tie = 2.6 m, 1 bundle = 50 ties
Yield: approx. 130 lineer meters/bundle

THERMAL INSULATION PROFILES

**Baumit PVC - Joint Profile With Mesh**

PVC profile with mesh used to obtain an aesthetic appearance by placing it in the duct formed on the facades of buildings.

Baumit PVC - Joint profile with mesh

Dimension: 30 x 16 mm
Packaging: 1 tie = 3 m, 1 bundle = 20 ties
Yield: approx. 60 lineer meter/bundle

Baumit Joint profile with mesh

Dimension: 50 x 16 mm
Packaging: 1 tie = 3 m, 1 bundle = 20 ties
Yield: approx. 60 lineer meter/bundle

**Baumit PVC - Joint Profile Without Mesh**

PVC profile used to obtain an aesthetic appearance by placing it in the duct formed on the facades of buildings.

Baumit PVC - Joint profile without mesh

Dimension: 30 x 16 mm
Packaging: 1 tie = 3 m, 1 bundle = 30 ties
Yield: approx. 90 lineer meter/bundle

Baumit PVC - Joint profile without mesh

Dimension: 50 x 16 mm
Packaging: 1 tie = 3 m, 1 bundle = 20 ties
Yield: approx. 90 lineer meter/bundle

**Baumit Windowsill Extension Profile**

PVC profile used for short window and parapet sills in thermal insulation applications.

Baumit Windowsill Extension Profile 4 cm

Color: White
Packaging: 1 tie = 3 m, 1 bundle = 30 ties
Yield: approx. 90 lineer meters/bundle

Baumit Windowsill Extension Profile 6 cm

Color: White
Packaging: 1 tie = 3 m, 1 bundle = 25 ties
Yield: approx. 75 lineer meters/bundle

Baumit Windowsill Extension Profile 8 cm

Color: White
Packaging: 1 tie = 3 m, 1 bundle = 20 ties
Yield: approx. 60 lineer meters/bundle

**Baumit Joint Sealing Tape**

Self-adhesive, self-expanding, fully impermeable joint sealing tape made of polyurethane soft foam with impregnated, compressed, self-adhesive side surfaces.

Baumit Joint Sealing Tape

Size: 2 x 6 mm
Packaging: 1 roll = 18 m, 1 box = 5 rolls
Yield: approx. 90 lineer meters/box



Strong Protection

Mineral Renders

CEMENT BASED PLASTERS



Baumit MVR Uni

White cement based, perlite machine plaster mortar with a grain size of 1 mm, suitable for use as top coat or rough plaster in interior and exterior areas. Thanks to its perlite reinforcement, it can be applied on surfaces such as aerated concrete without the need for pre-spreading and provides superior performance against plaster cracks.

- High strength
- High surface quality
- Easy application

Baumit MVR Uni

Consumption: approx. 14 kg/m² for 1 cm thickness
 Yield: approx. 3 m²/bag for 1 cm thickness
 Packaging: 40 kg bag, 1 pallet 40 bags = 1600 kg



Baumit MPA 35 L

Cement-based, perlite machine plaster with 1mm grain size, suitable for use as topcoat or rough plaster in interior and exterior areas mortar. Thanks to its perlite reinforcement, it can be applied on surfaces such as aerated concrete without the need for pre-spreading and provides superior performance against plaster cracks.

- High adhesion strength
- Efficient
- Easy application

MPA 35 L

Consumption: approx. 12.5 kg/m² for 1 cm thickness
 Yield: approx. 3.2 m²/bag for 1 cm thickness
 Packaging: 40 kg bag, 1 pallet 40 bags = 1600 kg

CEMENT BASED PLASTERS



Baumit MPA 35

Cement based machine plaster mortar with 1mm grain size, suitable for use as finishing coat or rough plaster in interior and exterior areas.

- Fine textured
- Water repellent
- High surface quality

MPA 35

Consumption: approx. 14 kg/m² for 1 cm thickness
 Yield: approx. 2.9 m²/bag for 1 cm thickness
 Packaging: 40 kg bag, 1 pallet 40 bags = 1600 kg



Baumit Primo 2

Cement based machine plaster mortar with 2mm grain size, suitable for use as finishing coat or rough plaster in interior and exterior areas.

- High strength
- High water repellency
- Thick textured

Primo 2

Consumption: approx. 15 kg/m² for 1 cm thickness
 Yield: approx. 2.7 m²/bag for 1 cm thickness
 Packaging: 40 kg bag, 1 pallet 40 bags = 1600 kg



Gypsum
Cement
Lime

Baumit Expert for Every plaster



Application Video

You can scan the QR code on your mobile phone to watch the video

For a natural
and healthy living
Interior Values



HEALTHY LIVING 62

INTERIOR COATINGS 69

PLASTERS 70



Baumit Healthy Living

Healthy indoor climate

	Ionit System	Healthy Living Systems		
	Healthy Air Ions	Smooth	Thin Texture	Coarse Texture
Final Coating	2x IonitColor	2x KlimaColor	2x KlimaColor	KlimaDekor
Primer	EasyPrimer	EasyPrimer	—	EasyPrimer
Putty	IonitFinish / IonitFino	KlimaFino/KlimaFinish	—	—
Plaster		KlimaMPI	KlimaMPI	KlimaMPI
	<ul style="list-style-type: none"> ■ For a healthier indoor climate ■ Less pollen, aerosols and finedust inside ■ For more vitalizing air ions 	<ul style="list-style-type: none"> ■ Smooth & modern ■ Natural & mineral ■ Moisture buffering 	<ul style="list-style-type: none"> ■ Classic fine texture ■ Fast & easy application ■ Moisture buffering 	<ul style="list-style-type: none"> ■ Vibrant, beautiful surface ■ Natural & mineralic ■ Moisture buffering



- Healthy living environment
- Great feelgood factor
- Durable and beautiful
- Strong and safe
- Fast & precise
- Ready to use products
- Individual and creative
- Modern and decorative
- High quality for your well-being

Today, people breathe 13.5 kg of indoor air and only 1.5 kg of outdoor air every day.

Considering the amount of indoor air we breathe, it is clear how important indoor air quality is.

The humidity, cleanliness and temperature of indoor air have a significant impact on our quality of life, comfort and health.



The next level of "healthy living"
Ionit

IONIT COLOR



Baumit IonitColor

High-quality, mineral interior paint for walls and ceilings. Available in 66 selected Ionit shades. Processing: rolling, painting and airless sprayable. Highly permeable, very good covering, E.L.F., free of preservatives. Baumit Ionit Color actively improves the indoor air by generating natural air ions.



- More healthy air ions
- Better recreation
- Less pollen

IonitColor	14 l
Consumption:	approx. 0.25 kg/m ² for two coats
Yield:	approx. 4 m ² /liter, 56 m ² /bucket
Packaging:	14 l bucket, 1 pallet = 32 buckets = 448 l

IonitColor	5 l
Consumption:	approx. 0.25 kg/m ² for two coats
Yield:	approx. 4 m ² /liter, 20 m ² /bucket
Packaging:	5 l bucket, 1 pallet = 64 buckets = 320 l

IONIT FINISH



Baumit IonitFinish

For fast application - ready to use, pasty putty for interior application which regulates humidity actively. Suitable for filling joints and coating surfaces (quality class Q1 to Q4). For mechanical (airless-spraying) and manual processing. Suitable for substrates: plaster-board, plaster and concrete. Recommended for new buildings and renovation. Best in combination with IonitColor.



- Improves indoor climate
- Ideal complement of Ionit Color
- Perfect surface quality

IonitFinish	20 kg
Consumption:	approx. 1.55 kg/m ² /1 mm layer thickness approx. 2.30 kg/m ² with layer thickness of 1,5 mm
Yield:	approx. 8 m ² /bucket with thickness of 1,5 mm
Packaging:	20 kg bucket, 1 pallet = 32 buckets = 640 kg

For detailed information about Baumit Ionit:



IONIT PUTTIES



Baumit IonitFino

Dry putty for interior application which regulates humidity actively. Suitable for filling joints and coating surfaces (quality class Q1 to Q4). For manual processing. Suitable for substrates: plaster-board, plaster and concrete. Recommended for new buildings and renovation. Best in combination with IonitColor.

- Improves indoor climate
- Ideal complement of Ionit Color
- Perfect surface quality

IonitFino	
Consumption:	approx. 0.85 kg/m ² /mm layer thickness approx. 1.275 kg/m ² with layer thickness of 1,5 mm
Yield:	approx. 12 m ² /bag with layer thickness of 1,5 mm
Packaging:	15 kg, 1 pallet = 54 bags = 810 kg

BAUMIT IONIT COLOR - 66 RELAXING COLORTONES

				0010 Whitney*		0018 Bianca	
0056 Flora	0186 Kim	0286 Alice	0356 Lea	0406 Romy	0416 Olivia	0566 Selina	0596 Victoria
0057 Jana	0187 Grace	0287 Ina	0357 Mia	0407 Marie	0417 Ria	0567 Nadine	0597 Yuna
0058 Denise	0188 Fiona	0288 Ivy	0358 Emma	0408 Naomi	0418 Nina	0568 Tessa	0598 Xenia
0059 Diana	0189 Elisa	0289 Amy	0359 Lucy	0409 Sophie	0419 Sarah	0569 Vivien	0599 Tina
0706 Killian	0776 Ennio	0786 Flynn	0866 Jasper	0936 Maxim	0976 Milan	1036 Odin	1066 Vito
0707 Benno	0777 Darius	0787 Hugo	0867 Andre	0937 Lio	0977 Navid	1037 Marco	1067 Toni
0708 Adam	0778 Elliah	0788 Keno	0868 Levin	0938 Norman	0978 Vincent	1038 Rafael	1068 Nico
0709 Aron	0779 Klaas	0789 Juri	0869 Carlos	0939 Oskar	0979 Noah	1039 Sam	1069 Tom

* For 0010 Whitney, please consult Baumit.



Healthy and reliable

Klima

KLIMA PLASTERS



Baumit KlimaWhite

Lime-based, lightweight, machine plaster mortar with hydraulic binder, natural white color, moisture balancing feature, suitable for indoor use.

- Regulating indoor air and open to diffusion
- High breathability
- Free of harmful substances and prevents mold and mildew

KlimaWhite

Consumption: approx. 13 kg / m² 1 cm
Yield: approx. 3 m² / bag 1 cm
Packing: 40 kg bag, 1 pallet 40 bags = 1600 kg



Baumit KlimaMPI

Lime-based, lightweight, machine plaster mortar with hydraulic binder, moisture balancing feature, suitable for indoor use.

- Regulating indoor air
- High breathability
- Free of harmful substances and prevents mold and mildew

KlimaMPI

Consumption: approx. 13 kg / m² 1 cm
Yield: approx. 3 m² / bag 1 cm
Packing: 40 kg bag, 1 pallet 40 bags = 1600 kg

KLIMA PLASTERS



Baumit KlimaUni

Natural-white, moisture-regulating lightweight lime plaster with hydraulic binding agent for manual processing indoors.

- Breathable, and regulates indoor climate
- Naturally white manually-applied plaster
- Contaminant-free & mould-inhibiting

KlimaUni

Consumption: approx. 13 kg / m² 1 cm
Yield: approx. 3 m² / bag 1 cm
Packing: 25 kg, 1 pallet 54 bags = 1350 kg



Baumit KlimaPerla

It is a natural white lime-based thin plaster for interiors. It is ideal for use as a top coat on lime / cement plaster floors and also as a thin layer on concrete, aerated concrete and gypsum boards.

- Improves the room climate & highly diffusion-open
- Universal usable
- Pollutant-free & mildew-inhibiting

KlimaPerla

Consumption: approx. 1.2 kg / m² 1 mm
Yield: approx. 3 m² / bag 1 cm
Packing: 25 kg, 1 pallet 54 bags = 1350 kg



Baumit KlimaFino

Natural white colored, lime based, powder form satin plaster mortar suitable for smooth surface applications in interiors.

- Improves the room climate & highly diffusion-open
- High-quality smooth surface
- Pollutant-free & mildew-inhibiting

KlimaFino

Consumption: approx. 1.2 kg / m² 1 mm
Yield: approx. 5.5 m² / bag 3 mm
Packing: 25 kg, 1 pallet 60 bags = 1200 kg



Baumit KlimaFinish

Natural white colored, lime based, ready to use satin putty suitable for smooth surface applications indoors.

- Improves the room climate & highly diffusion-open
- High-quality smooth surface
- Pollutant-free & mildew-inhibiting

KlimaFinish

Consumption: approx. 1.2 kg / m² 1 mm
Yield: approx. 5.5 m² / bag 3 mm
Packing: 25 kg, 1 pallet 32 bags = 640 kg

For detailed information about Baumit Klima:



KLIMA COATINGS

**Baumit KlimaDekor**

Natural white, ready-to-use, mineral and lime-based, environmentally friendly thin-layer paste plaster, for application on interior walls. Can be applied manually.

- For vibrant, beautiful surfaces
- Indoor climate-regulating
- Simple and quick application

**KlimaDekor K 1.5 mm**

Consumption: approx. 2.7 – 2.9 kg/m²/1.5 mm
 Yield: approx. 9 m²/bucket /1.5 mm
 Packing: 25 kg bucket, 1 pallet = 32 buckets = 800 kg

KlimaDekor K 1.0 mm

Consumption: approx. 1.6 – 1.8 kg/m²/ 1 mm
 Yield: approx. 14.5 m²/bucket /1 mm
 Packing: 25 kg bucket, 1 pallet = 32 buckets = 800 kg

**Baumit KlimaColor**

High quality, silicate based, natural mineral interior paint with easy application and high coverage, suitable for interior use.

- For vibrant, beautiful surfaces
- Indoor climate-regulating
- Simple and quick application

**KlimaColor**

Consumption: approx. 0.25 l/m²
 Yield: approx. 56 m²/bucket
 Packing: 14 l bucket, 1 pallet = 32 buckets = 448 l



Fine and Beautiful
INTERIOR COATINGS

PUTTIES

**Baumit GlemaBrillant**

Fine-grained, white cement based, mineral, satin plaster mortar suitable for smooth surface applications indoors.

- Smooth surface
- High resistance to moisture
- Easy application

GlemaBrillant

Consumption: approx. 1.5 kg/m² 1 mm
 Yield: approx. 6.5 m² /bag 2 mm
 Packing: 20 kg bag, 1 pallet 60 bags = 1200 kg

**Baumit FinoBello**

A top coat satin finish plaster suitable for smooth surface applications indoors.

- Smooth surface
- High holding power
- Easy application

FinoBello 25 kg

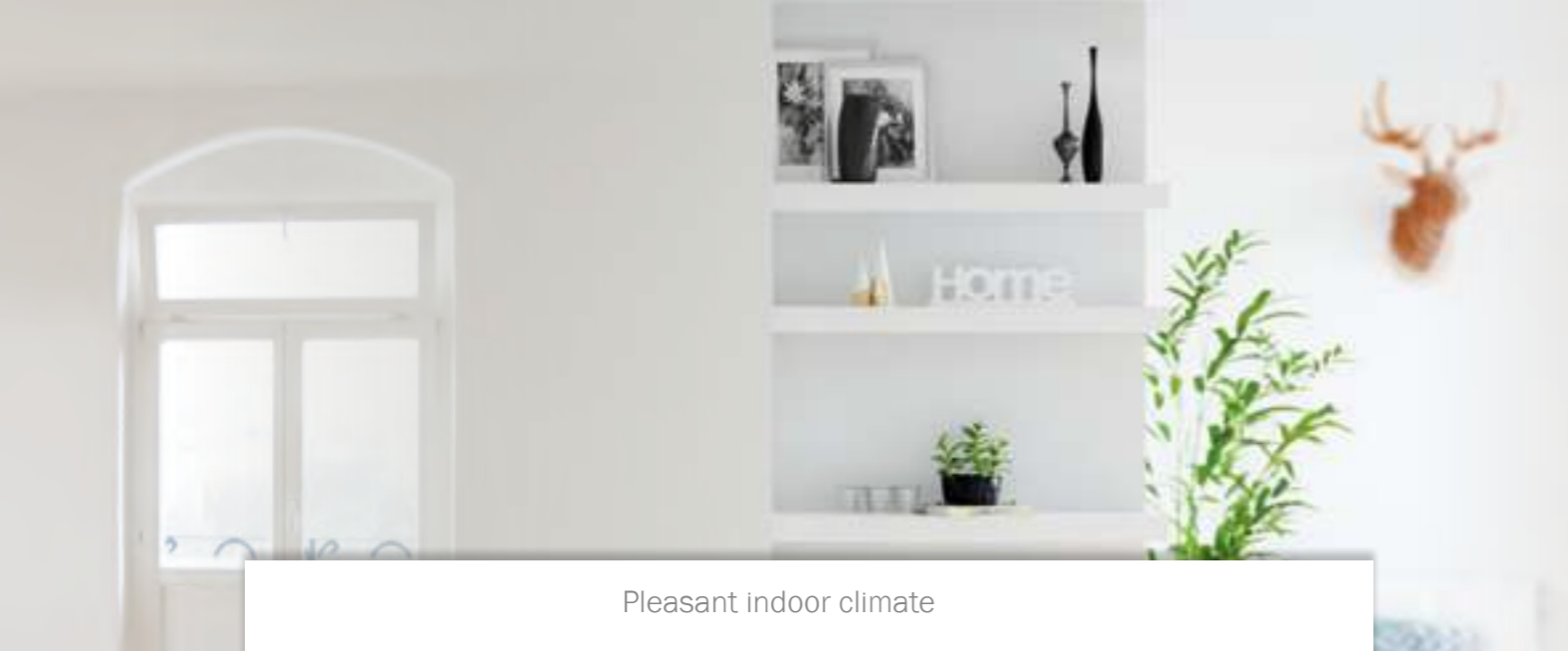
Consumption: approx. 1.5 kg/m² 1 mm
 Yield: approx. 12.5 m² /bag 2 mm
 Packing: 25 kg bag, 1 pallet 50 bags = 1250 kg

FinoBello 5 kg

Consumption: approx. 1.5 kg/m² 1 mm
 Yield: approx. 2.5 m² /bag 2 mm
 Packing: 5 kg bucket, 1 pallet 90 buckets = 450 kg

FinoBello 2 kg

Consumption: approx. 1 kg/m² 1 mm
 Yield: approx. 1 m² /bag 2 mm
 Packing: 2 kg bucket, 1 pallet 168 buckets = 336 kg



Pleasant indoor climate

Plasters

CEMENT BASED MACHINE PLASTERS



Baumit MPI 25

Cement based machine plaster mortar with a grain size of 0.6 mm, suitable for indoor use.

- Fine textured surface
- High holding power
- Easy application

MPI 25

Consumption:	approx. 14 kg/m ² 1 cm
Yield:	approx. 3 m ² /bag 1 cm
Packing:	40 kg bag, 1 pallet 40 bags = 1600 kg



Baumit Primo 1

Cement based machine plaster mortar with a grain size of 1 mm, suitable for indoor use.

- High strength
- High surface quality
- Easy application

Primo1

Consumption:	approx. 15 kg/m ² 1 cm
Yield:	approx. 2.7 m ² /bag 1 cm
Packing:	40 kg bag, 1 pallet 40 bags = 1600 kg

HAND APPLIED PLASTERS



Baumit Manu 2

Lime/cement basic plaster for conventional manual application, for indoor and outdoor use. Grain size 2 mm

- High surface quality
- High holding power
- Wide range of applications

Manu 2

Consumption:	approx. 16 kg/m ² 1 cm
Yield:	approx. 1.25 m ² /bag 2 cm
Packing:	40 kg bag, 1 pallet 40 bags = 1600 kg



Baumit Manu 4

Lime/cement basic plaster for conventional manual application, for indoor and outdoor use. Grain size 4 mm.

- Excellent filling capability
- High strength
- Easy and fast implementation

Manu 4

Consumption:	approx. 16 kg/m ² 1 cm
Yield:	approx. 1.25 m ² /bag 2 cm
Packing:	40 kg bag, 1 pallet 40 bags = 1600 kg

GYPSUM BASED MACHINE PLASTERS



Baumit Ratio Glatt

Gypsum based machine plaster mortar with a grain size of 1 mm, suitable for indoor use.

- High surface quality
- High strength
- Easy and fast implementation

Ratio Glatt

Consumption:	approx. 12-13 kg/m ² 1 cm
Yield:	approx. 2.7-2.9 m ² /bag 2 cm
Packing:	35 kg bag, 1 pallet 40 bags = 1400 kg

SUB SURFACE PREPARATION



Baumit Spritz

Cement based pre-spread machine plaster mortar suitable for use in interior and exterior areas to increase adhesion before cement based plaster applications.

- Balancing absorbency
- High holding power
- Solid ground preparation

Spritz

Consumption:	approx. 10 kg/m ² 100% coverage im
Yield:	application approx. 4 m ² /bag
Packing:	40 kg bag, 1 pallet 40 bags = 1600 kg



Baumit Betonkontakt

Primer used indoors and outdoors on low absorbency concrete surfaces to stabilize absorbency and increase adhesion before gypsum and cement based machine plasters.

- For concrete surfaces
- Before gypsum and cement-based plasters
- Solvent free

Betonkontakt 20 kg

Consumption:	approx. 0.25 kg/m ²
Yield:	approx. 80 m ² /bucket
Packing:	20 kg bucket, 1 pallet 24 buckets = 480 kg

Betonkontakt 5 kg

Consumption:	approx. 0.25 kg/m ²
Yield:	approx. 20 m ² /bucket
Packing:	5 kg bucket, 1 pallet 90 buckets = 450 kg

For safety and comfort
Solidity Counts



TILING	74
FLOORING	80
CONSTRUCTION	82



Tiling Baumacol

ADHESIVES



Baumit Baumacol FlexTop Speed

Cement based, polymer modified fillers, high performance, C2FTS1 class adhesive mortar with reduced slipping, flexible, fast bonding, C2FTS1 class, used for bonding ceramic, tile, glass mosaic, porcelain ceramic, glazed porcelain, granite ceramic, granite, marble, natural stone and similar tiles on horizontal and vertical surfaces.

- Fast bonding
- Highly flexible (S1)
- Indoor and outdoor floor and wall applications

C2FTS1



Baumacol FlexTop Speed

Consumption: approx. 3-5 kg/m²
Yield: approx. 5-8 m²/bag
Packing: 25 kg bag, 1 pallet 60 bags = 1500 kg



Baumit Baumacol FlexTop

Gray cement based, polymer modified fillers, high performance, flexible C2TES1 class adhesive mortar with reduced slipping, extended open time, flexible C2TES1 class adhesive mortar used for bonding ceramic, tile, glass mosaic, porcelain ceramic, glazed porcelain, granite ceramic, granite, marble, natural stone and similar tiles on horizontal and vertical surfaces.

- Highly flexible (S1)
- Open holding time extended, slippage reduced
- Indoor and outdoor floor and wall applications

C2TES1



Baumacol FlexTop

Consumption: approx. 3-5 kg/m²
Yield: approx. 5-8 m²/bag
Packing: 25 kg bag, 1 pallet 60 bags = 1500 kg

ADHESIVES



Baumit Baumacol FlexMarmor

White cement based, polymer modified fillers, high performance, ceramic, tile, glass mosaic on horizontal and vertical surfaces, C2TES1 class adhesive mortar used for bonding porcelain ceramic, glazed porcelain, granite ceramic, granite, marble, natural stone and similar tiles, with reduced slipping, extended open time, flexible..

- White color, highly flexible (S1)
- Open holding time extended, slippage reduced
- Indoor and outdoor floor and wall applications

C2TES1



Baumacol FlexMarmor

Consumption: approx. 3-5 kg/m²
Yield: approx. 5-8 m²/bag
Packing: 25 kg bag, 1 pallet 60 bags = 1500 kg



Baumit Baumacol FlexUni White

White cement based, polymer modified fillers, high performance, ceramic, tile, glass mosaic on horizontal and vertical surfaces, C2TE class adhesive mortar used for bonding porcelain ceramic, glazed porcelain, granite ceramic and similar tiles, with reduced slip properties and extended open waiting time.

- Off-white color
- Open holding time extended, slippage reduced
- Suitable for indoor and outdoor floor, indoor wall applications

C2TE



Baumacol FlexUni White

Consumption: approx. 3-5 kg/m²
Yield: approx. 5-8 m²/bag
Packing: 25 kg bag, 1 pallet 60 bags = 1500 kg



Baumit Baumacol FlexUni

Gray cement based, polymer modified fillers, high performance, ceramic, tile, glass mosaic on horizontal and vertical surfaces, C2TE class adhesive mortar used for bonding porcelain ceramic, glazed porcelain, granite ceramic and similar tiles, with reduced slip properties and extended open time.

- Open standby time extended
- Reduced slippage
- Suitable for indoor and outdoor floor applications, indoor wall applications

C2TE



Baumacol FlexUni

Consumption: approx. 3-5 kg/m²
Yield: approx. 5-8 m²/bag
Packing: 25 kg bag, 1 pallet 60 bags = 1500 kg



Baumit Baumacol Flexo

Gray cement based, polymer modified fillers, high performance, C2T class adhesive mortar with reduced slip properties, used for bonding ceramic, tile, glass mosaic, porcelain ceramic, glazed porcelain, granite ceramic and similar tiles on horizontal and vertical surfaces..

- Economic
- Reduced slippage
- Suitable for indoor and outdoor floor applications, indoor wall applications

C2T



Baumacol Flexo

Consumption: approx. 3-5 kg/m²
Yield: approx. 5-8 m²/bag
Packing: 25 kg bag, 1 pallet 60 bags = 1500 kg

ADHESIVES



Baumit Baumacol Pro

Gray cement based, C1TE class adhesive mortar containing polymer modified fillers, used for bonding ceramic, tile, glass mosaic and similar tiles on horizontal and vertical surfaces, with reduced slip properties and extended open time.

- Extended open holding time, reduced slipping
- Suitable for indoor floor and wall applications
- Tiles 1600 cm² and below



C1TE



Baumacol Pro

Consumption: approx. 3-5 kg/m²
 Yield: approx. 5-8 m²/baga
 Packing: 25 kg bag, 1 pallet 60 bags = 1500 kg



Baumit Baumacol Bianco

White cement based, C1T class adhesive mortar with reduced slip properties, containing polymer modified fillers, used for bonding ceramic, tile and similar tiles on horizontal and vertical surfaces.

- White color, reduced slippage
- Suitable for indoor floor and wall applications
- Tiles 900 cm² and below



C1T



Baumacol Bianco

Consumption: approx. 3-5 kg/m²
 Yield: approx. 5-8 m²/baga
 Packing: 25 kg bag, 1 pallet 60 bags = 1500 kg



Baumit Baumacol Basic

Gray cement based, C1T class adhesive mortar with reduced slip properties, containing polymer modified fillers, used for bonding ceramic, tile and similar tiles on horizontal and vertical surfaces.

- Reduced slippage
- Suitable for indoor floor and wall applications
- Tiles 900 cm² and below



C1T



Baumacol Basic

Consumption: approx. 3-5 kg/m²
 Yield: approx. 5-8 m²/baga
 Packing: 25 kg bag, 1 pallet 60 bags = 1500 kg



Baumit Baumacol One

Gray cement based, C1 class adhesive mortar used for bonding ceramic, tile and similar tiles on horizontal surfaces.

- Economic
- Indoor floor applications
- Tiles 900 cm² and below



C1



Baumacol One

Consumption: approx. 3-5 kg/m²
 Yield: approx. 5-8 m²/baga
 Packing: 25 kg bag, 1 pallet 60 bags = 1500 kg

SUBSTRATE PREPARATION



Baumit Baumacol Preciso

Gray cement based, modified with additives, water and frost resistant, powder form, fine textured correction and repair mortar.

- High adhesion
- High strength
- Easy application



Baumacol Preciso

Consumption: Approx. 1.6 kg/m² 1mm
 Yield: approx. 15 m²/baga
 Packing: 25 kg bag, 1 pallet 60 bags = 1500 kg



Baumit Baumacol Proof

One-component, elastic, ready-to-use waterproofing material with crack bridging properties, suitable for seamless application indoors.

- Seamless application
- Crack bridging
- Easy application



Baumacol Proof

Consumption: Approx. 1.5 kg/m² 1mm
 Packing: 7 kg bucket, 1 pallet 64 buckets = 448 kg



Baumit Baumacol Protect 2K

Cement and synthetic resin based, two component, semi-elastic, normal cement, liquid applied, crack bridging under standard conditions, chloride water resistant CMP class waterproofing product.

- Waterproof
- Water vapour permeable
- Flexible and crack bridging



Baumacol Protect 2K

Consumption: Approx. 1.5 kg/m² 1mm
 Packing: 7 kg bucket, 1 pallet 64 buckets = 448 kg



Baumit Baumacol Protect 2K Elastic

Cement and synthetic resin based, two component, fully elastic, normal cement, liquid applied, low temperature crack bridging (-5°C), chloride water resistant CMO1P class waterproofing product.

- High resistance to water and frost
- Possibility of application on large surfaces
- High crack bridging ability at low temperatures



Baumacol Protect 2K Elastic

Consumption: Approx. 1.5 kg/m² 1mm
 Packing: 30 kg set= 20 kg bags + 10 kg canister

JOINT FILLING MORTARS

**Baumit Baumacol PremiumFuge**

Cement based, high performance, CG2WA class flexible grouting mortar containing polymer modified fillers, with reduced water absorption and high abrasion resistance, used for 1-8 mm joint spacing.

- High water repellency
- High flexibility and abrasion resistance
- Reduced water absorption

**Baumacol PremiumFuge 20 kg**

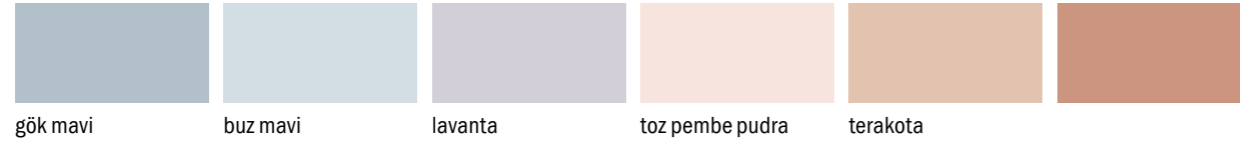
Consumption: approx. 0.2-0.8 kg/m² depending on joint width and ceramic dimensions
 Packing: 20 kg bag, 1 pallet 60 bags = 1200 kg

Baumacol PremiumFuge 5 kg

Consumption: approx. 0.2-0.8 kg/m² depending on joint width and ceramic dimensions
 Packing: 5 kg bucket, 1 pallet 90 buckets = 450 kg

Baumacol PremiumFuge 2 kg

Consumption: approx. 0.2-0.8 kg/m² depending on joint width and ceramic dimensions
 Packing: 2 kg bucket, 1 pallet 168 buckets = 336 kg

**NATURAL
LINE****VINTAGE
LINE****COUNTRY
LINE****URBAN
LINE**

SUPPLEMENTS

**Baumit Baumacol Strap**

Special elastic band used between waterproofing materials for floor and wall joints, which are the joints of two different building elements where movement is intense and the risk of breakage and cracking is high.

Baumacol Strap

Packing: 1 rulo = 10 m



For best tiling applications:

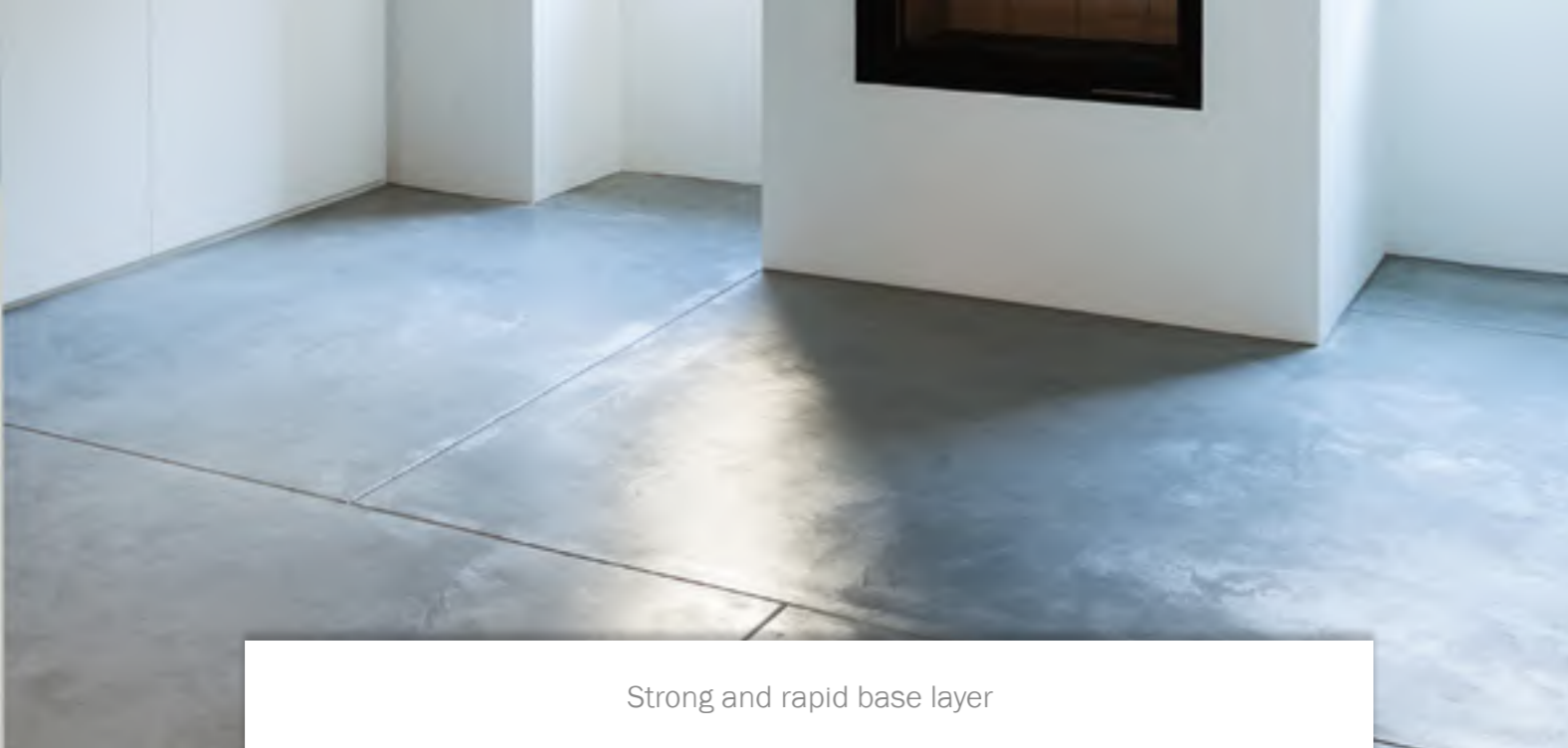
Baumit Baumacol



Baumit Baumacol Tile Adhesive Selection Chart

		Tile Ceramic	Tile Ceramic	Tile Ceramic	Tile Ceramic Glass Mosaik	Tile Ceramic Glass Mosaik Porcelain Ceramic Glazed Porcelain Granite Seramic	Tile Ceramic Glass Mosaik Porcelain Ceramic Glazed Porcelain Granite Seramic	Tile Ceramic Glass Mosaik Porcelain Ceramic Glazed Porcelain Granite Seramic	Ceramic Glass Mosaik Porcelain Ceramic Glazed Porcelain Granite Seramic Large Size Coatings Natural Stone Granite Marble	Ceramic Glass Mosaik Porcelain Ceramic Glazed Porcelain Granite Seramic Large Size Coatings Natural Stone Granite Marble	Ceramic Glass Mosaik Porcelain Ceramic Glazed Porcelain Granite Seramic Large Size Coatings Natural Stone Granite Marble
		One C1	Basic C1T	Bianco C1T	Pro C1TE	Flexo C2TE	FlexUni C2TE	FlexUni White C2TE	FlexTop C2TES1	FlexMarmor C2TES1	FlexTop Speed C2FTS1
Tile Dimension	< 900 X ²	i	i	i	i	+	+	+	+	+	+
	< 1600 X ²	-	-	-	i	+	+	+	+	+	+
	< 2500 X ²	-	-	-	-	l (z)	+	+	+	+	+
	< 3600 X ² *	-	-	-	-	-	l (z)	l (z)	+	+	+
	< 100X100 cm *	-	-	-	-	-	-	-	+	+	i (z)
	< 120X120 cm *	-	-	-	-	-	-	-	-	-	i (z)
Tile Water Absorption	>10 %	i	i	i	i	+	+	+	+	+	+
	3 - 10 %	-	i	i	i	+	+	+	+	+	+
	0,5 - 3 %	-	-	-	i	+	+	+	+	+	+
	< 0,5 %	-	-	-	-	-	i	i	+	+	+
Wall	Cement Based Plaster	-	i	i	i	+	+	+	+	+	+
	Concrete	-	-	-	-	-	+	+	+	+	+
	Gypsum Based Plaster	-	-	-	" i (Over SuperPrimer) "	" i (Over SuperPrimer) "	" i (Over SuperPrimer) "	" i (Over SuperPrimer) "	" i (Over SuperPrimer) "	" i (Over SuperPrimer) "	" i (Over SuperPrimer) "
	Gypsum Board	-	-	-	-	" i (Over SuperPrimer) "	" i (Over SuperPrimer) "	" i (Over SuperPrimer) "	" i (Over SuperPrimer) "	" i (Over SuperPrimer) "	" i (Over SuperPrimer) "
Floor	Cement Based Screed	i	i	i	i	+	+	+	+	+	+
	Concrete	-	-	-	-	-	+	+	+	+	+
	Calcium Sulphate Based Screed	-	-	-	" i (Over Grund) "	" i (Over Grund) "	" i (Over Grund) "	" i (Over Grund) "	" i (Over Grund) "	" i (Over Grund) "	" + (Over SuperPrimer) "
	Floor Heating System	-	-	-	-	-	i	i	i	i	i
Tile over Tile	Wall and Floor	-	-	-	-	-	-	-	" + (Over SuperPrimer) "	" + (Over SuperPrimer) "	" + (Over SuperPrimer) "
Water Insulation	Wall and Floor	-	-	-	-	-	+	+	+	+	+

i = interior + = interior and exterior z = only floor * = buttering floating method



Strong and rapid base layer

Flooring

SELF LEVELLING COMPOUNDS GYPSUM BASED



Baumit Nivello Quattro

Calcium sulphate based, CA-C20-F6 class self-leveling screed that can be applied in 3-20 mm thickness indoors, suitable for use before all types of floor coverings and with underfloor heating systems.

- Zero cracks
- Suitable for underfloor heating systems
- For indoor applications



Nivello Quattro

Consumption: approx. 1.6 kg/m² 1 mm
Yield: approx. 5.2 m² /bag 3 mm
Packing: 25 kg bag, 1 pallet 60 bags = 1500 kg



Baumit Nivello Uno

Cement based, CT-C16-F4 class self-leveling screed that can be applied in 3-20 mm thickness indoors, suitable for use before all types of floor coverings and with underfloor heating systems.

- Minimized risk of cracks
- Moisture resistant
- For indoor applications



Nivello Uno

Consumption: approx. 1.8 kg/m² 1 mm
Yield: approx. 4.6 m² /bag 3 mm
Packing: 25 kg bag, 1 pallet 60 bags = 1500 kg

SELF LEVELLING COMPOUNDS CEMENT BASED



Baumit Solido 225

Cement based, C20-F5 class floor screed containing polymer additives, can be applied indoors and outdoors, suitable for use with underfloor heating systems before self-leveling screed without the need for additional additives.

- High strength
- Suitable for underfloor heating systems
- For indoor and outdoor applications



Solido 225

Consumption: approx. 20 kg/m² 1 mm
Yield: approx. 2 m² /bag 1 mm
Packing: 40 kg bag, 1 pallet 40 bags = 1600 kg



Baumit Solido 160

C16-F4 class floor screed, cement based, containing polymer additives, can be applied indoors and outdoors, suitable for use with underfloor heating systems before self-leveling screed without the need for additional additives.

- Easy application
- Suitable for underfloor heating systems
- For indoor and outdoor applications



Solido 160

Consumption: approx. 20 kg/m² 1 mm
Yield: approx. 2 m² /bag 1 mm
Packing: 40 kg bag, 1 pallet 40 bags = 1600 kg

SUBSTRATE PREPARATION



Baumit SuperPrimer

Solvent-free primer for interior and exterior floors and walls, suitable for use on glossy surfaces that are difficult to adhere to.

- Acts as a bridge with the bottom surface
- For shiny and smooth surfaces
- Solvent free



SuperPrimer 20 kg

Consumption: approx. 0.3 kg/m² depending on the substrate
Packing: 20 kg bucket, 1 pallet 24 buckets = 480 kg

SuperPrimer 5 kg

Consumption: approx. 0.3 kg/m² depending on the substrate
Packing: 5 kg bucket, 1 pallet 64 buckets = 320 kg



Grund

Solvent-free, organic binder primer that can be applied on floors and walls indoors, suitable for use to balance the absorbency of mineral substrates.

- Absorbency stabilizer
- High penetration
- Wide range of applications



Grund 25 kg

Consumption: approx. 0.025-0.15 kg/m² depending on the substrate
Packing: 25 kg bucket, 1 pallet 24 buckets = 600 kg

Grund 5 kg

Consumption: approx. 0.025-0.15 kg/m² depending on the substrate
Packing: 5 kg bucket, 1 pallet 120 buckets = 600 kg



Professional Solution

Masonry Mortars

MASONRY MORTAR



Baumit PlanoFix

Cement based, polymer added, water repellent, fine textured, hand applied, water repellent, fine textured, suitable for bonding aerated concrete and similar masonry elements indoors and outdoors.

- High adhesion strength
- For standard conditions
- Easy application

PlanoFix

Consumption: approx. 1.5 kg/m² for 1 mm
Yield: approx. 16.5 m² /bag
Packing: 25 kg bag, 1 pallet 60 bags = 1500 kg



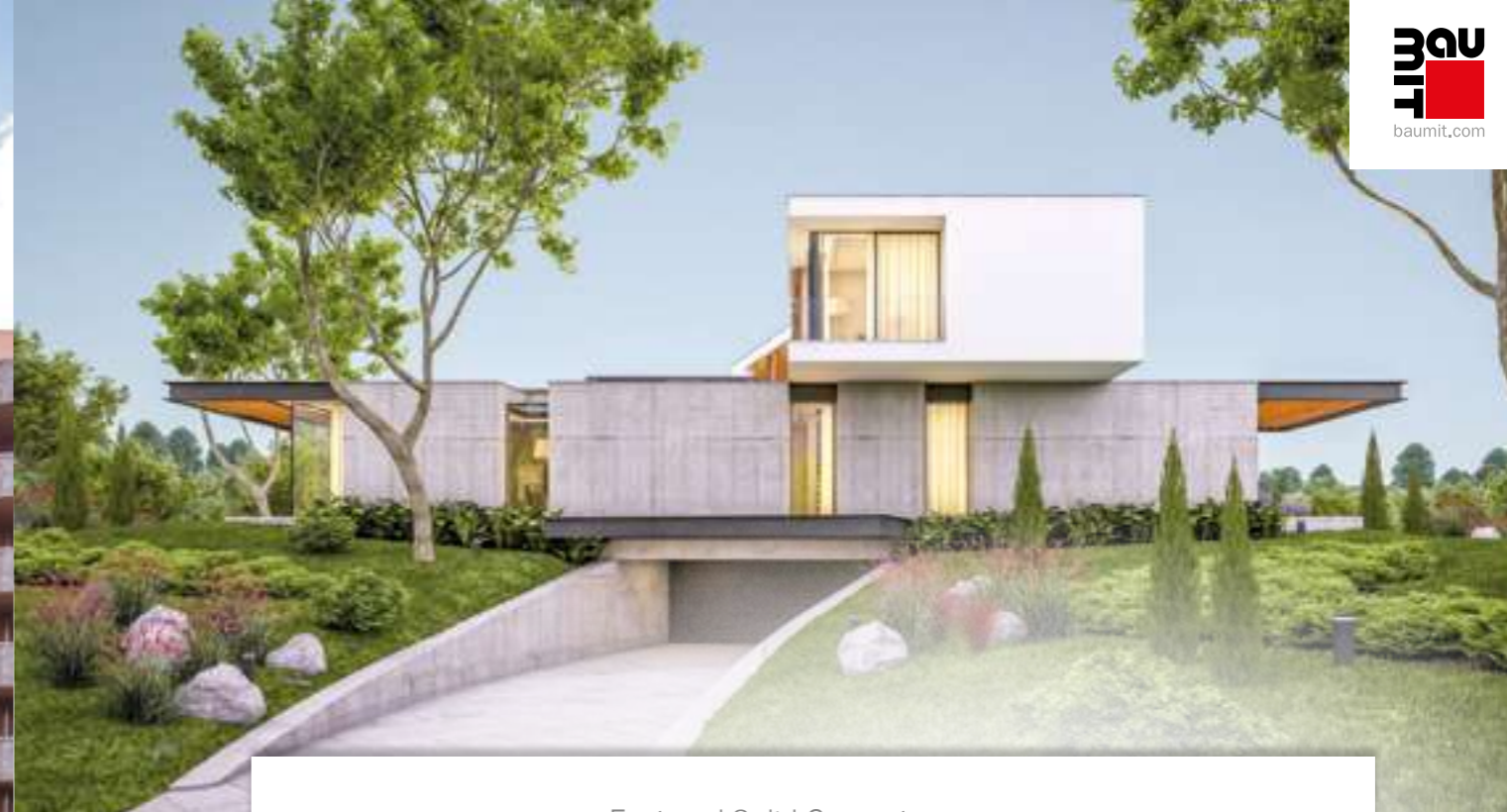
Baumit MM 30

Cement-based, polymer-added, thick textured, hand-applied masonry mortar suitable for bonding bricks and similar masonry elements indoors and outdoors.

- High adhesion strengths
- For standard conditions
- Easy application

MM30

Consumption: Variable according to the type of knitting element used and the thickness of the application
Packing: 40 kg bag, 1 pallet 40 bags = 1600 kgg



Fast and Solid Concrete

Ready Mix Concrete Mortars

READY-MIXED CONCRETE



Baumit ALL IN Beton

Factory mix, ready-mixed dry concrete mortar with C16/20 strength class, reinforced with natural fibers, with innovative dissolvable bag technology for concrete works in areas without static conditions.

- No bag waste
- Fast and easy application
- Reinforced with natural fibers

ALL IN Beton B20

Consumption: approx. 20 kg/m² for 1 cm thickness = 2,000 kg 1m² fresh concrete
Yield: 15 liters of fresh concrete/bag
Packing: 30 kg bag, 1 pallet 50 bags = 1500 kg



Baumit Beton B30

Cement-based, polymer-added, hand-applied, C30 class ready-mixed concrete mortar suitable for all concrete applications such as stairs, garden walls, retaining walls, etc. indoors and outdoors.

- High strength
- Practical application in tight spaces
- Wide range of applications

Beton B30

Consumption: approx. 20 kg/m² for 1 cm thickness = 2000 kg 1m³ fresh concrete
Yield: 20 l of fresh concrete/bag
Packing: 40 kg bag, 1 pallet 40 bags = 1600 kg



Baumit Beton B20

Cement-based, polymer-added, hand-applied, C20 class ready-mixed concrete mortar suitable for all concrete applications such as stairs, garden walls, etc. made indoors and outdoors in residences and gardens.

- For standard conditions
- Practical application in tight spaces
- Wide range of applications

Beton B20

Consumption: approx. 20 kg/m² for 1 cm thickness = 2000 kg 1m³ fresh concrete
Yield: 20 l of fresh concrete/bag
Packing: 40 kg bag, 1 pallet 40 bags = 1600 kg

Baumit Pioneer of innovation in ETICS

SERVICES 86

GENERAL TERMS & CONDITIONS 90

INDEX 94



BaumitTurkiye

444 4 BTR
287



SERVICES

BAUMIT LOGISTICS & CUSTOMER SERVICE:

Our "Logistics & Customer Services" unit serves to manage more effectively the follow-up of all operational processes from the process that starts after the order entry on my.baumit.com.tr sales portal until the shipment delivery.

By communicating directly with our "Logistics & Customer Services" unit, you can track your orders and shipments much easier and faster. Order entry and completion of operational processes are as follows.

- E-mail notification of vehicle release planning date with order confirmation
- Notification of vehicle exit, driver license plate and construction site information via SMS
- Order delivery note e-mail notification
- Invoice e-mail notification

Tel: 444 4 287 / 444 4 BTR
E-posta: lojistik@baumit.com.tr

BAUMIT

You can reach the Baumit Çözüm Line, where you can find solutions to your questions and problems related to every stage of the processes we partner with, in the fastest and most accurate way, through the following communication channels..

E-mail: cozum@baumit.com.tr
Whatsapp: 0549 622 86 48 / 0549 6BA UM IT

BAUMIT TECHNICAL

Baumit's experienced expert staff is with you in every area you need with the right system and product selection, application techniques and sample studies during the project phase and on the construction site.

E-mail: teknik@baumit.com.tr

Baumit Academy

- Trainings on site
- Application trainings
- Theoretical trainings

Baumit Assist

- Technical support on site
- Mock-up applications
- Hand samples

Digital Facade Coloring Service



Digital facade coloring service is priced at €45.00/project. The coloring service is limited to three alternatives for each project and a single revision to be made in only one alternative. If the facade application of the relevant project is made with Baumit products, the cost of the coloring service is deducted from the order amount.

BAUMIT WEB

www.baumit.com.tr

You can access all information about our systems, products and services on our corporate website.

- Catalogs
- Technical Data Sheets
- Safety Data Sheets
- Quality Certificates
- Quality Certificates

www.baumitlife.com

On the website prepared for the Baumit Life® color system, you can access all information about the Life® color chart and use our digital color library prepared for different design programs in your own designs.

www.baumitmantolama.com.tr

You can get detailed information about the ETICS of Baumit, the pioneer of innovation in ETICS, which offers up to 30 years of warranty, specially designed for all types of facade needs, and you can contact us by filling out the contact form.

www.gelecegimizimantoluyoruz.com

You can learn about climate change and global warming and the steps Baumit is taking to address this global problem.

OTHER DOCUMENTS

- Possibilities with Baumit
- Solutions with Baumit
- Baumit Product Catalog
- Baumit ETICS Application Guide
- Baumit Product Selection Cards

All catalogs are available at www.baumit.com.tr and the Baumit Life digital color library is available at www.baumitlife.com.

**Easy Life**

Easy-to-carry and practical color chart with all Baumit life colors

**Shades of White**

A color chart with 12 shades of white designed for different design needs on facades.

**MosaikTop**

MosaikTop Color chart with Natural Line and Essential Line shades

**Ionit**

Color chart with 65 specially selected Ionit shades.

**Color Reader**

SILO SERVICE

**Advantages**

- This service offered to projects is a prominent application in terms of both occupational health and environmental sensitivity.
- In the silo system, products are delivered to the construction site by silobas and no bag waste is generated.
- It is nature friendly.
- It offers a cleaner application and environment as there is no bag cutting on site.
- here is no need for a closed storage area for bags at the construction site.
- Eliminates extra costs such as cranes since bags do not need to be pulled to the floors.
- More applications are made instead of the time spent pulling bags to the floors.

Silo System Technical Specifications

- It works with pneumatic propulsion logic and provides smooth product transportation up to a height of at least 120 m (in vertical application).
- Our silos have a product capacity of approximately 27 tons.
- Thanks to the easy and fast installation, the application can be started quickly.
- Thanks to the special sensors on our silos, how much product remains in the silo is monitored by remote control system.

ISO

The manufacturer of Baumit products, Wopfinger Baustoffindustrie GmbH, is ISO 9001 certified. Baumit has ISO 9001:2015 certificate in Turkey. At the same time, ISO 14001:2105 Environmental Management System and ISO 45001:2018 Occupational Health and Safety Management System certificates have also been obtained.

**CE**

Baumit products fulfil all requirements applicable in Europe (such as CE-Norm).

**EMICODE**

Emicode is a registered eco-label for the product classification of low emission construction products. EMICODE is a consumer health and safety organisation for the evaluation and selection of chemical construction products. Provides guidance on environmental protection.

**NaturePlus**

Natureplus Eco-label, tüketicilere ve inşaat profesyonellerine sürdürülebilir ürünler alanında güvenilir bir yönelim sunar. (çevreye ve sağlığa duyarlı ürünler) Sürdürülebilirlikle ilgili tüm alanlar için yüksek kalite standartlarına uygunluğu onaylar.

**Consumption**

All consumption information is for guidance only and is not binding in any way. Actual consumption amounts depend on surface properties, application method and performance; it is recommended to make a consumption controlled sample application before application.

Printing errors and inaccuracies are reserved.



Baumit Headquarters



Baumit Wet Production



Baumit Dry Mortar Production



Baumit Export

LT - LIETUVA
Baumit UAB
 LT-14188 Lithuania
 Ukmergės g. 364, Vilnius
 Tel.: +370 5 264 07 78
 info@baumit.lt
 www.baumit.lt
In charge of: LV, EE

SI - SLOVENIJA
Baumit d.o.o.
 SLO - 1236 Trzin
 Dobrave 12
 Tel.: +386 1 236 37 55
 info@baumit.si
 baumit@baumit.si
 www.baumit.si

MK - REPUBLIKA SEVERNA MAKEDONIJA
Baumit Makedonija Doel
 MK - 1000 Skopje
 Ul. Jadranska Magistrala 165
 Tel.: +389 2 306 98 07
 Fax: +389 2 306 98 07
 info@mk.baumit.com
 www.baumit.com.mk

SK - SLOVENSKÁ REPUBLIKA
Baumit, spol. s r. o.
 SK - 811 02 Bratislava
 Žižkova 9
 Tel.: +421 2 593 03 311
 office@baumit.sk
 www.baumit.sk

PL - POLSKA
Baumit sp. z o.o.
 PL - 53-012 Wrocław
 ul. Wyścigowa 56 G
 Tel.: +48 71 358 25 00
 info@baumit.pl
 www.baumit.pl

TR - TURKIYE
Baumit TR
 Baumit İnşaat Malzemeleri San. Tic.Ltd.Şti
 Esensehir Mahallesi Hale Sokak No. 10 B Blok
 TR - 34776 Ümraniye/Istanbul
 Tel.: +90 (0) 216/680 34 00
 Fax: +90 (0) 216/680 34 01
 info@baumit.com.tr
 www.baumit.com.tr

RO - ROMANIA
Baumit Romania Com SRL
 RO - 061129 Bucuresti
 B-dul Luliu Maniu nr. 600A, sector 6
 Tel.: +40 21 350 01 06
 Fax: +40 21 318 24 08
 office@baumit.ro
 www.baumit.ro

UA - UKRAINE
TOV Baumit Ukraine
 UA - 03083 Kiev
 vul. Pyrohivskyy Shlyah 34
 Tel.: +380 44 568 52 54
 Fax: +380 44 586 47 39
 office@baumit.ua
 www.baumit.ua

RS - SRBIJA
Baumit Serbia d.o.o.
 SRB - 11130 Beograd
 Smederevski put 25k
 Tel.: +381 11 347 50 82
 Fax: +381 11 347 47 95
 office@baumit.rs
 www.baumit.rs
In charge of: AL, KO

UK - UNITED KINGDOM
Baumit Ltd.
 Unit 2 Westmead
 New Hythe Lane, Aylesford
 Maidstone, Kent, ME20 6XJ - UK
 Tel.: +44 (0) 1622 710 763
 contact@baumit.co.uk
 www.baumit.co.uk
In charge of: IE

AT - AUSTRIA
Baumit GmbH
 Wopfing 156
 A - 2754 Waldegg
 Tel.: +43 (0) 0501 888-0
 Fax: +43 (0) 0501 888-1266
 office@wopfing.baumit.com
 www.baumit.at

BA - BOSNA I HERCEGOVINA
Baumit d.o.o.
 BiH-71210 Iliđza
 Osik 2 b
 Tel.: +387 33 566 770
 Fax: +387 33 566 771
 info@baumit.ba
 www.baumit.ba
In charge of: ME

CZ - ČESKÁ REPUBLIKA
Baumit, spol. sr.o.
 CZ - 250 01 Brandýs nad Labem
 Průmyslová 1841
 Tel.: +420 326 900 400
 info@baumit.cz
 www.baumit.cz

ES - ESPAÑA
Baumit S.L.
 ES - 28935 Móstoles (Madrid)
 P.I. Las Nieves, c/ Puerto de Cotos, 17
 Tel.: +34 916 407 227
 Fax: +34 916 360 092
 info@baumit.es
 www.baumit.es
In charge of: PT

GR - GRIECHENLAND
Baumit A.E.
 GR - 15235 Vrilissia-Athens
 142, Pentelis avenue
 Tel.: +30 210 6095600
 Fax: +30 210 6095611
 info@baumit.gr
 www.baumit.gr
In charge of: CY

HR - HRVATSKA
Baumit d.o.o.
 HR - 10090 Zagreb
 Vučak 34
 Tel.: +385 1 346 68 00
 Fax: +385 1 346 68 38
 baumit@baumit.hr
 www.baumit.hr

BG - BULGARIA
Baumit Bulgaria EOOD
 BG - 21 00 Elin Pelin
 Bulgaria Str. 38
 Tel.: +359 2 926 69 11
 Fax: +359 2 926 69 18
 office@baumit.bg
 www.baumit.bg

CH - SCHWEIZ
Baumit Schweiz AG
 CH - 8303 Bassersdorf
 Hardstrasse 20
 Tel.: +41 52 354 50 70
 Fax: +41 52 354 50 71
 office@schweiz.baumit.com
 www.baumit.com

DE - DEUTSCHLAND
Baumit GmbH
 D - 87541 Bad Hindelang/Allgäu
 Reckenberg 12
 Tel.: +49 83 24 921-0
 Fax: +49 83 24 921-1279
 info@baumit.de
 www.baumit.de
In charge of: BE, NE, LU, DK, NO, FI, SE

FR - FRANCE
Baumit SAS
 FR - 77360 Vaires-sur-Marne
 1 Impasse de la Centrale
 Tel.: +33 1 762 170 21
 Fax: +33 1 762 170 10
 info@baumit.fr
 www.baumit.fr

HU - MAGYARORSZÁG
Baumit Kft.
 H - 2510 Dorog,
 H - 2511 Dorog, Pf.: 132.
 Tel.: +36 33 512 910
 Fax: +36 33 431 512
 baumit@baumit.hu
 www.baumit.hu

IT - ITALIA
Baumit Spa
 I - 33078 San Vito al Tagliamento (PN)
 Via Castelnuovo del Friuli 1 - Z.L. Ponte Rosso
 Tel.: +39 0434 1850980
 Fax: +39 0434 853 59
 info@baumit.it
 www.baumit.it

Index

A		G		O	
ALL IN Beton	83	Gaz Beton Dübeli	53	openContact	46
B		GlemaBrillant	69	open Fascina	38
Baumit CrystaTop	29	Glitter	26	openTherm	49
Baumacol PremiumFuge	78	GranoporTop	32		
Baumacol FlexMarmor	75	Grund	81	P	
Baumacol Flexo	75			PlanoFix	82
Baumacol FlexTop	74	I		PowerFlex	47
Baumacol FlexTop Speed	74	IonitColor	64	PremiumPrimer	42
Baumacol FlexUni	75	IonitFinish	64	Primo 1	70
Baumacol FlexUni White	75	IonitFino	65	Primo 2	59
Baumacol Protect 2K	77	K		ProContact	47
Baumacol Protect 2K Elastic	77	KlimaColor	68	ProTherm	49
Baumacol Basic	76	KlimaDekor	68	PuraColor	24
Baumacol Bianco	76	KlimaFinis	67	PuraTop	31
Baumacol One	76	KlimaFino	67		
Baumacol Preciso	77	KlimaMPI	66	R	
Baumacol Pro	76	KlimaPerla	67	Ratio Glatt	71
Baumacol Proof	77	KlimaUni	67		
Baumacol Strap	78	KlimaWhite	66	S	
Beton B20	83			Solido 160	81
Beton B30	83	L		Solido 225	81
BetonKontakt	71	Lasur	26	Spritz	71
C				StarColor	24
Classico Fine	38	M		StarContact White	46
Classico Special	38	Manu 2	71	StarTex	50
CreativTop	34	Manu 4	71	StarTherm	49
		Mekanik Tırnaklı Dübel	52	StarTop	30
D		Metallic	26	StarTrack X1	51
DispoFix	48	MineralTherm	49	SuperPrimer	81
DuoContact	47	MM 30	82		
DuoFix	48	MosaikTop	36	U	
DuoTop	32	MPA 35	59	UniPrimer	42
		MPA 35 L	58		
E		MPI 25	70		
EasyFlex	48	MVR Uni	58		
EasyPrimer	43				
F		N			
FillPrimer	43	Nivello Quattro	80		
Finish	26	Nivello Uno	80		
FinoBello	69	NivoFix	48		



Baumit Systems
offer the longest warranty periods



and the Bag is Gone!

Concrete in self-dissolving bags!

The new Baumit All-In Beton is packed in a self-dissolving bag. You can lift it directly into the mixer or put it in the mortar trough – without removing the bag!

This makes working so much easier and more comfortable. In addition, the concrete will be reinforced with natural fibers, which makes it even more solid. Above all, you have no waste and less pollution on your construction site. Another step into the future for Baumit's Go2morrow sustainability concept.



- **Self-dissolving bag**
- **No waste & less dust on construction site**
- **Natural fibre reinforced concrete**

